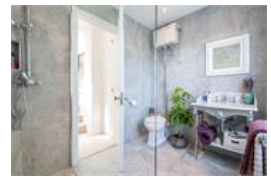
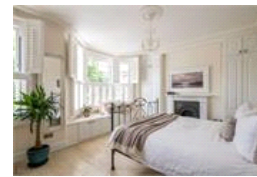
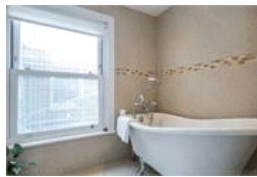
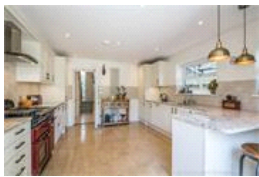


Melbourne Grove , SE22 (4 Bedroom House)

£1,250,000



property description

Located in the heart of East Dulwich is a stunning, beautifully restored and maintained four double bedroom mid-terrace Victorian family home offering plenty of light and space. The property is decorated to a very high standard throughout with an abundance of period features including three fireplaces, cornicing, high ceilings, ceiling roses and internal and external corbels. The house has the great kerb appeal that one would expect from a Victorian period property with exposed red brick walls and detailed masonry around the bay windows and front door. The house was extended and refurbished in 2016 with thoughtful attention to detail. Everything was done to this beautiful house. There ...

property features

- Beautifully refurbished 4 double bedroom mid-terrace Victorian family home
- Superb landscaped rear garden
- Double reception room with period features
- Dulwich Village within 0.25 miles
- Kitchen breakfast room
- Gorgeous family bathroom with a roll top bath and walk in shower
- Luxurious en-suite shower room in the loft bedroom suite and downstairs WC

ALPS Estates Ltd trading as Pickwick Estates
47 Honor Oak Park Honor Oak
London, SE23 1EA, United Kingdom
Reg No : 7444750
Registered in England

Telephone : 020 3397 1166
Website : <https://www.pickwickestates.co.uk>





For Full EPC information, click [here](#)