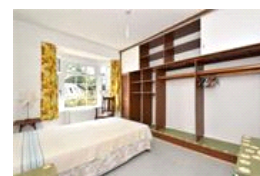
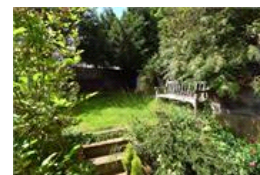
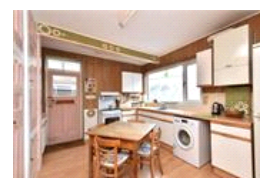


Hengrave Road , SE23 (2 bedroom House)

£650,000



property description

Oozing character and charm is this utterly unique and very special property. Set on a generous plot of land on this popular street, 'Lavender Cottage' is a double fronted, DETACHED, two double bedroom, two bathroom Victorian bungalow, with off street parking and a garage, kitchen/diner, double glazing and central heating system. You don't come across houses like this very often! Dating back to 1885-1895, this distinctive property was originally the builder's office when the houses in the street were being built - and has been in the same family since 1954. Upon approach is a lovey mature front garden complete with a picket fence and - as one would expect - plenty of lavender! There is also off street parking in front of the garage and on the left there is side return access to the garden. The house is built from old stock Victorian bricks and there are two large bay windows either side of a pretty front door under an ornate front porch. The house offers well laid out accommodation with two equal sized bedrooms at the front of the house both with original wood flooring whi...

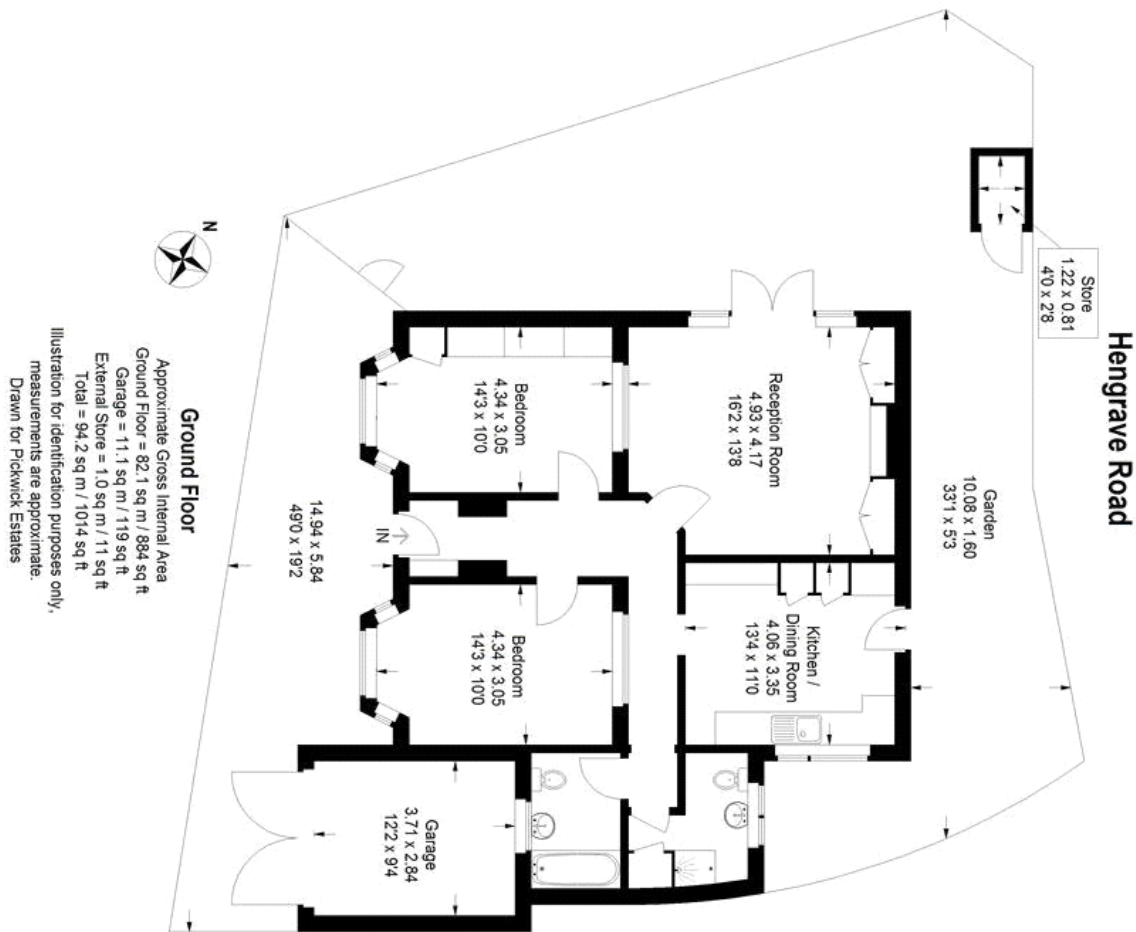
property features

- Charming and unique 2 bedroom DETACHED Victorian bungalow
- Off street parking and a garage
- Good size front and rear gardens
- Double glazing throughout
- Generous size reception room
- Good size kitchen breakfast room
- Bathroom and separate shower room
- Original flooring in the reception room ...

ALPS Estates Ltd trading as Pickwick Estates
47 Honor Oak Park Honor Oak
London, SE23 1EA, United Kingdom
Reg No : 7444750
Registered in England

Telephone : 020 3397 1166
Website : <https://www.pickwickestates.co.uk>





For Full EPC information, click [here](#)