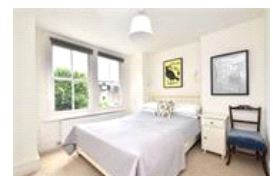
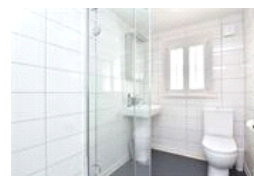
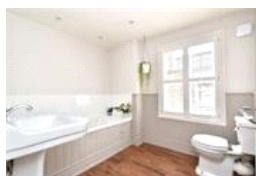
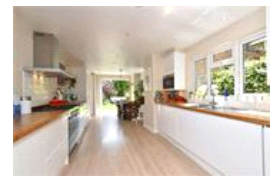
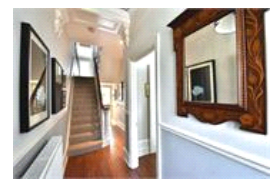
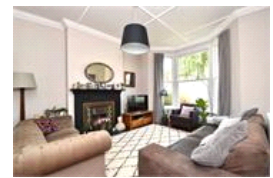


Elsinore Road , SE23 (3 bedroom House)

£800,000 (OIEO)



## property description

Set on this popular tree lined street is this very generous 3 double bedroom Victorian terraced family home. The house is offered to the market in excellent condition whilst still maintaining plenty of period character and charm. The house briefly comprises of 2 large reception rooms, a large kitchen dining room, 3 double bedrooms, bathroom, shower room and beautiful bijoux rear garden. The property also benefits from a cellar and huge loft space that could easily be converted to create additional bedrooms and a shower room (subject to planning consent). This handsome house is set back from the street with a walled front garden, there is also a lovely silver birch tree on the street that o...

## property features

- A very generous 3 double bedroom Victorian family home
- Offered to the market in excellent condition with plenty of period features
- Large kitchen dining room
- Victorian styled bathroom, separate modern shower room
- Neatly manicured rear garden with decked

ALPS Estates Ltd trading as Pickwick Estates  
47 Honor Oak Park Honor Oak  
London, SE23 1EA, United Kingdom  
Reg No : 7444750  
Registered in England

Telephone : 020 3397 1166  
Website : <https://www.pickwickestates.co.uk>





For Full EPC Information, click [here](#)