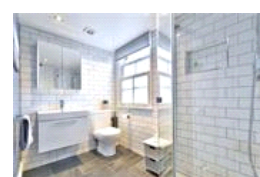
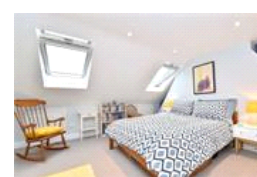
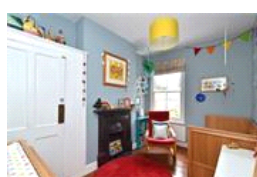
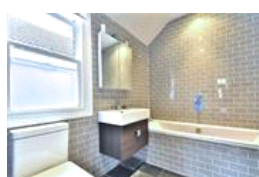
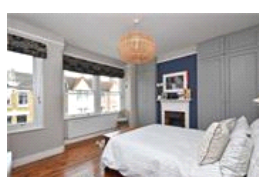
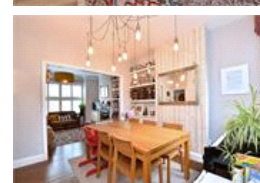
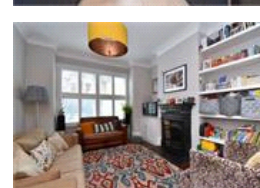
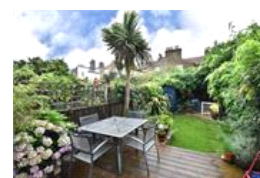


Whatman Road , SE23 (5 bedroom House)

£800,000 (OIEO)



property description

Open day Saturday 3rd August. Beautifully presented and offering bundles of character and charm is this 5-bedroom, Victorian terraced family home on this popular residential street in the heart of Honor Oak Park. The exterior of the house has great kerb appeal, a typical Victorian terrace with sash windows set in a square bay, surrounded by detailed masonry. The house has been painted in a stylish light grey, set back from the street with a neat front garden shielded by a Laurel hedge with a black and white tiled pathway leading to a classic period doorway and porch. On the ground floor there is a lovely double reception room which has original stripped and varnished wooden floors. Th...

property features

- 5 bedroom Victorian mid terraced family home
- Fantastic loft conversion with 2 double bedrooms and a shower room (built in 2015)
- Double reception room
- Recently fitted Kitchen breakfast room in summer 2017
- Nicely landscaped rear garden
- Family bathroom on the first floor

ALPS Estates Ltd trading as Pickwick Estates
47 Honor Oak Park Honor Oak
London, SE23 1EA, United Kingdom
Reg No : 7444750
Registered in England

Telephone : 020 3397 1166
Website : <https://www.pickwickestates.co.uk>





For Full EPC information, click [here](#)