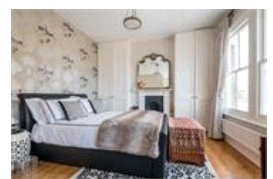
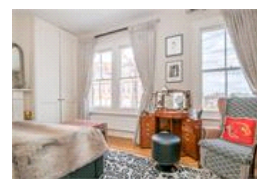
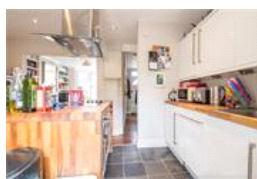
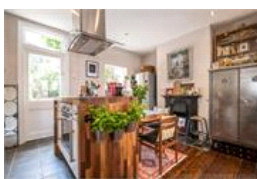
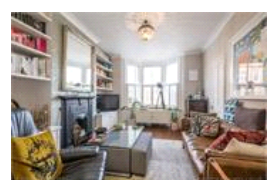
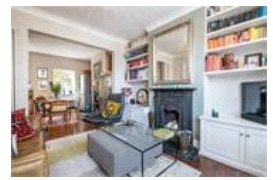


Jennings Road, SE22 (2 bedroom House)

£2,100/month



property description

Located in the heart of East Dulwich, offering an abundance of character and charm is this lovely two bedroom Victorian terraced house with a neatly landscaped, South facing private rear garden. The property is in good condition throughout and retains many of its original period features. The exterior is a typical Victorian Terrace house with exposed stock bricks with sash windows and detailed masonry above the windows and doorway, the property is set behind a walled front garden with a gate where there is also a secure wall mounted bicycle anchor. The ground floor has a front reception room with original floorboards, a Victorian Fireplace as a centre piece with built in cupboards a...

property features

- Charming and elegant 2 double bedroom Victorian terraced house
- Neatly landscaped, low maintenance SOUTH facing rear garden
- Good condition throughout with plenty of original
- Front lounge with a Victorian fireplace
- Dining room
- Modern kitchen with integrated appliances
- Close to East Dulwich and North Dulwich ...

ALPS Estates Ltd trading as Pickwick Estates
8 Woodwarde Road Dulwich
London, SE22 8UJ, United Kingdom
Reg No : 4270797
Registered in England

Telephone : 020 3397 1144
Website : <https://www.pickwickestates.co.uk>



Jennings Road, SE22 (2 bedroom House)

£2,100/month

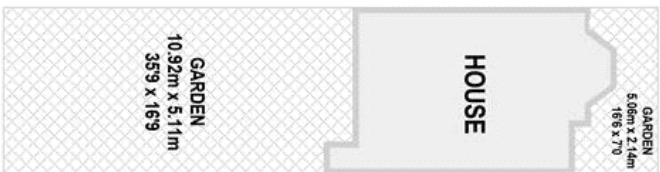
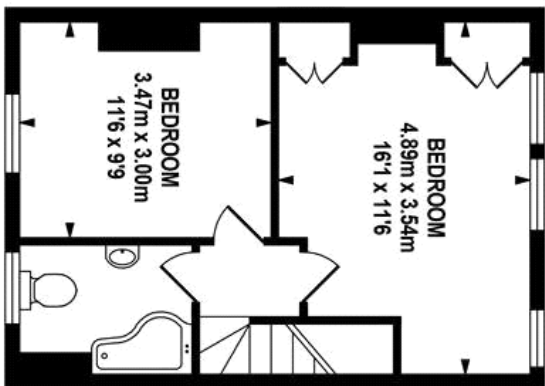
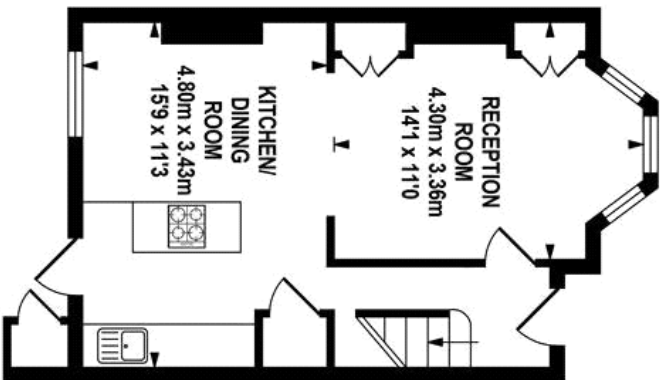


TOTAL APPROX.FLOOR AREA 68.92 SQ.M. (742 SQ.FT.)

GROUND FLOOR
APPROX. FLOOR
AREA 34.13 SQ.M.
(367 SQ.FT.)



FIRST FLOOR
APPROX. FLOOR
AREA 34.79 SQ.M.
(374 SQ.FT.)



SITE PLAN

Whilst every effort is made to accurately reproduce these floor plans, measurements are approximate, not to scale and for illustrative purposes only.
©Dulwich Energy Assessors Ltd. www.dea-tld.co.uk

Score	Energy rating	Current	Potential
92+	A		
81-91	B		
69-80	C		
55-68	D	63 D	87 B
39-54	E		
21-38	F		
1-20	G		

For Full EPC Information, click [here](#)