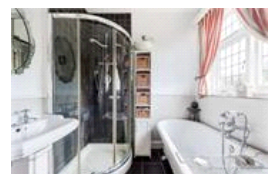
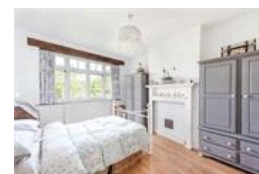
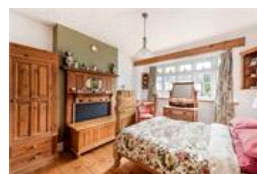
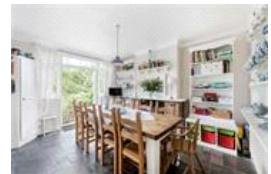


Canonbie Road , SE23 (3 bedroom House)

£850,000



property description

Beautifully presented and well maintained is this charming 3 double bedroom 1930's family home boasting plenty of character and charm and a nicely landscaped, large 71' West facing rear garden. This lovely mid terraced 30's house is set back from the street behind a walled front garden with a cast iron fence, a pathway through a lawn leads to the front entrance where there is a porch above the front door. Through the original 30's door is a generous entrance hall offering plenty of space for coats, prams, shoes and brollies. The entrance also houses the staircase and a pretty feature fireplace by the front door. At the front of the house is a good size reception room with an e...

property features

- Beautifully presented 3 double bedroom family home
- 1930's mid terrace house with plenty of original features such as stain glass windows
- Generous entrance hall with a feature fire place and original front door
- Open planned kitchen dining room
- Farmhouse style kitchen with butler sink and

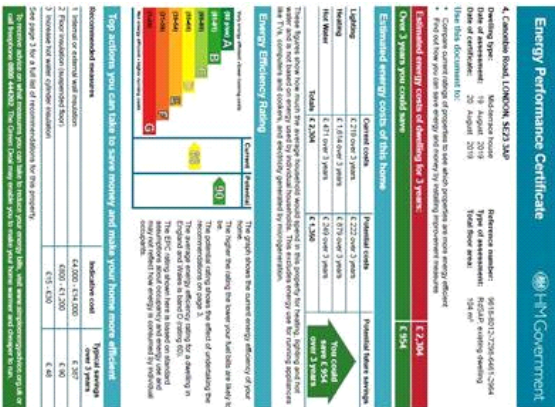
ALPS Estates Ltd trading as Pickwick Estates
47 Honor Oak Park Honor Oak
London, SE23 1EA, United Kingdom
Reg No : 7444750
Registered in England

Telephone : 020 3397 1166
Website : <https://www.pickwickestates.co.uk>





CANONBIE ROAD, SE23
Approx. Gross Internal Floor Area
1121 Sq. ft/104.10 Sq. m



For Full EPC information, click [here](#)