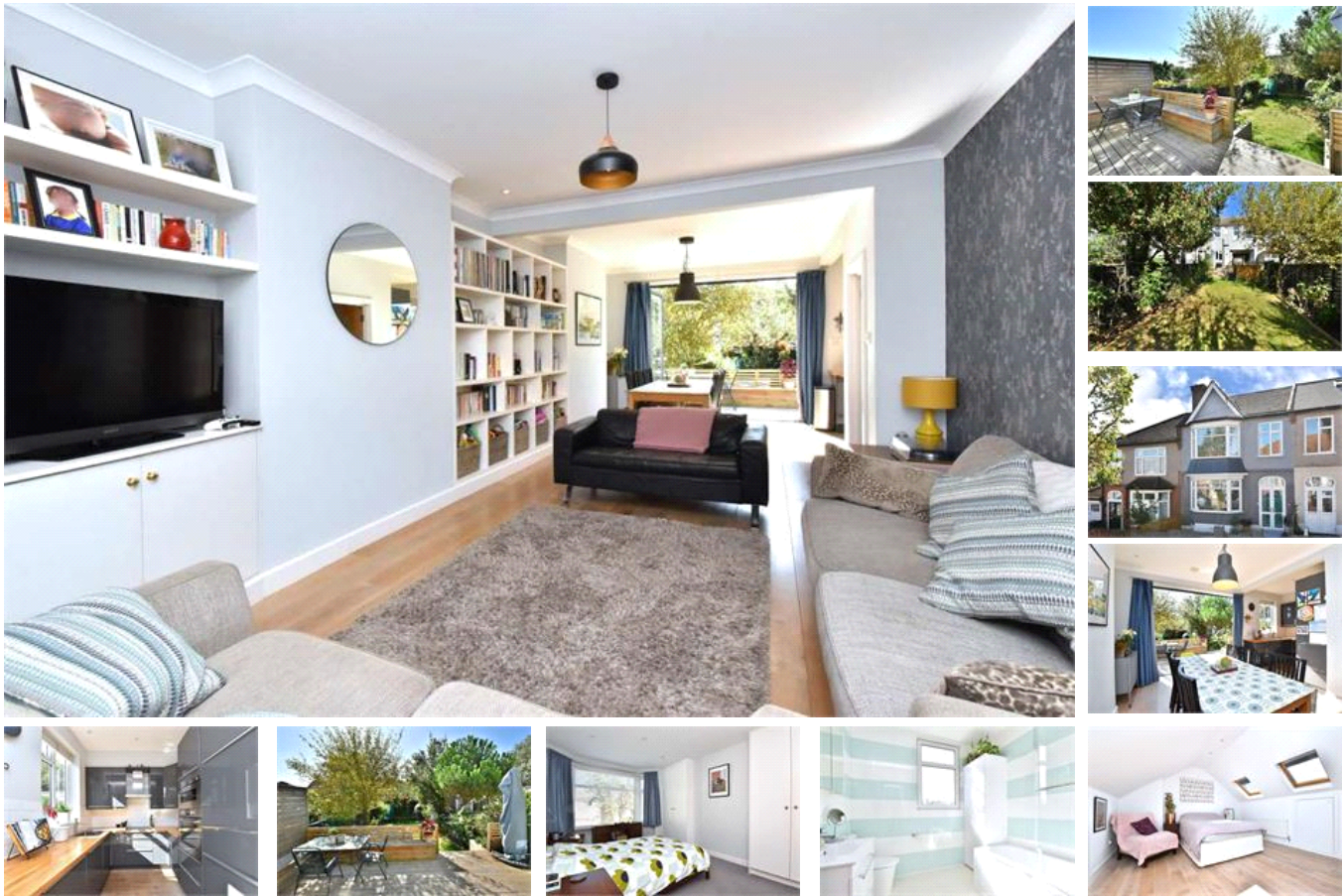


Casslee Road , SE6 (4 bedroom House)

£760,000



property description

A beautifully presented 4 bedroom semi detached family home located on this quiet residential street, offering generous proportions (1352 sqft / 125.6 sqm), a nicely landscaped SOUTH facing rear garden and double glazed windows throughout. The house is a handsome 1930's mid terrace that has an appealing kerb appeal with a very rendered facade, bay windows and a pitched roof. The house is set back from the street by a neatly landscaped front garden with a path leading to a front porch. Upon entry there is a good size entrance hall offering plenty of space for coats, shoes, brollies and negotiating prams! There is also storage under the stairs and a handy downstairs WC. The dual as...

property features

- Superb 4 bedroom 1930's family home
- SOUTH facing landscaped rear garden (approx 52ft) with a pizza oven
- Large double reception room with plenty of storage
- Stylish open planned kitchen with integrated appliances
- Modern bathroom
- Quiet residential street
- Converted loft bedroom

ALPS Estates Ltd trading as Pickwick Estates
47 Honor Oak Park Honor Oak
London, SE23 1EA, United Kingdom
Reg No : 7444750
Registered in England

Telephone : 020 3397 1166
Website : <https://www.pickwickestates.co.uk>





For Full EPC information, click [here](#)