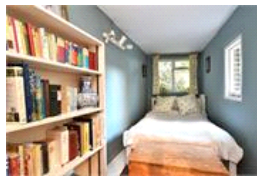
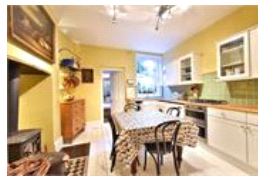
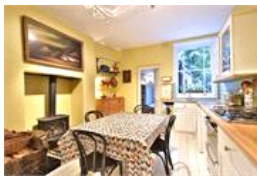


Blackheath Rise , SE13 (2 bedroom Flat)

£650,000



property description

Prepare to be impressed by this very special two bedroom garden flat that covers the entire ground floor of this beautiful detached Victorian residence. The property offers an abundance of internal floor space (1123 sqft), boasts stunning period features throughout, is sold with a SHARE OF FREEHOLD and a large South East facing private rear garden (95ft). The house has great kerb appeal, it's difficult not to be impressed by the stunning architecture of this imposing house which is covered in detailed masonry around the large sash windows and the grand front entrance. The house is set back from the street by a nice front garden and a path leads to the main entrance. Through a very...

property features

- Stunning, very spacious 2 bedroom garden flat (1123 sqft/104.3 sqm)
- Occupying the whole of the ground floor of this stunning detached Victorian house
- Generous proportions and plenty of period
- Large reception room with high ceilings
- SHARE OF FREEHOLD and a basement
- Large SOUTH EAST facing private rear garden (95 ft / 28.96 m)
- Green open spaces of Blackheath at the e...

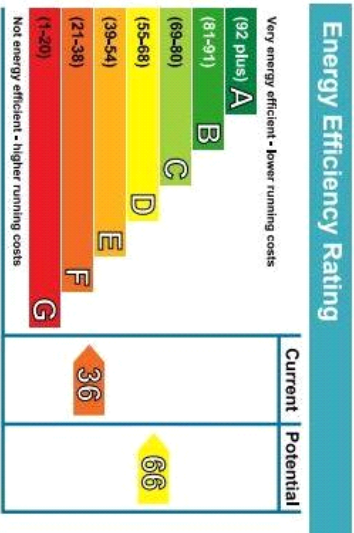
ALPS Estates Ltd trading as Pickwick Estates
47 Honor Oak Park Honor Oak
London, SE23 1EA, United Kingdom
Reg No : 7444750
Registered in England

Telephone : 020 3397 1166
Website : <https://www.pickwickestates.co.uk>



Blackheath Rise , SE13 (2 bedroom Flat)

£650,000



For Full EPC Information, click [here](#)