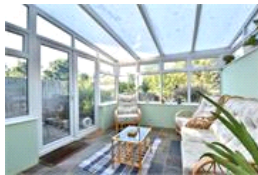


Baring Road, SE12 (3 bedroom House)

£450,000



property description

A nice spacious Wates built, 1930's semi-detached, three-bedroom end of terrace, chalet style house. Conveniently located between Lee and Grove Park stations as well as local shops and amenities. The house is in good decorative order with gas fired central heating and double glazing. The property is set back from the street by a good size front garden that has a lawn and mature trees offering privacy. The accommodation comprises; Vaulted entrance hall with good storage under the stairs, a 3rd bedroom/study can be found at the front of the house. A large dual aspect through reception with a bay window and a modern open planned kitchen at the back. There is also a large conservatory that has...

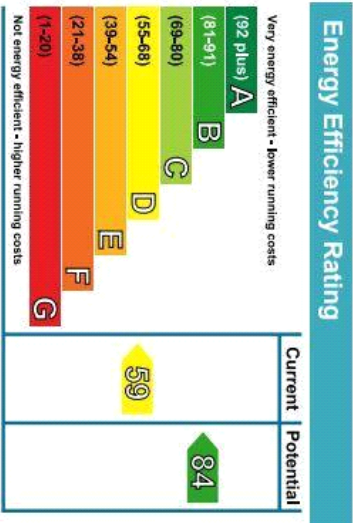
property features

- 3 bedroom semi detached family home
- Wates built 1930's chalet style house
- Gas central heating and double glazing throughout
- Conservatory leading to a patio
- Good size front garden and 60ft SOUTH WEST facing garden
- Dual aspect double reception room
- Open planned kitchen dining area
- Bathroom with 3 piece suite

ALPS Estates Ltd trading as Pickwick Estates
47 Honor Oak Park Honor Oak
London, SE23 1EA, United Kingdom
Reg No : 7444750
Registered in England

Telephone : 020 3397 1166
Website : <https://www.pickwickestates.co.uk>





For Full EPC information, click [here](#)