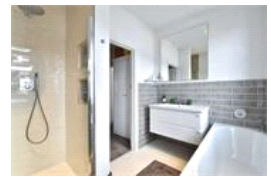
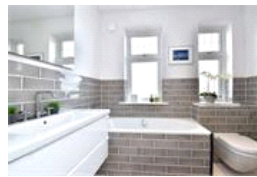
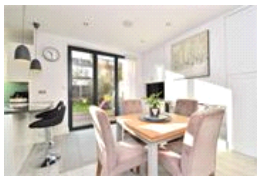


Tatnell Road , SE23 (3 bedroom House)

£825,000



## property description

Prepare to be amazed by this sophisticated 3 double bedroom Edwardian family home with a South facing rear garden, located on this very popular residential road in the heart of Honor Oak Park, only a few minutes' walk to the station. The house has great kerb appeal, set back from the street with a good size front garden that has been neatly landscaped with a black and white pathway leading to the entrance. The imposing Edwardian façade of Red bricks, large bay windows, an ornately decorated front door and porch is a very welcoming sight. The current vendors have made extensive improvements to the house and garden over the years creating a lovely balance of contemporary and classic as ...

## property features

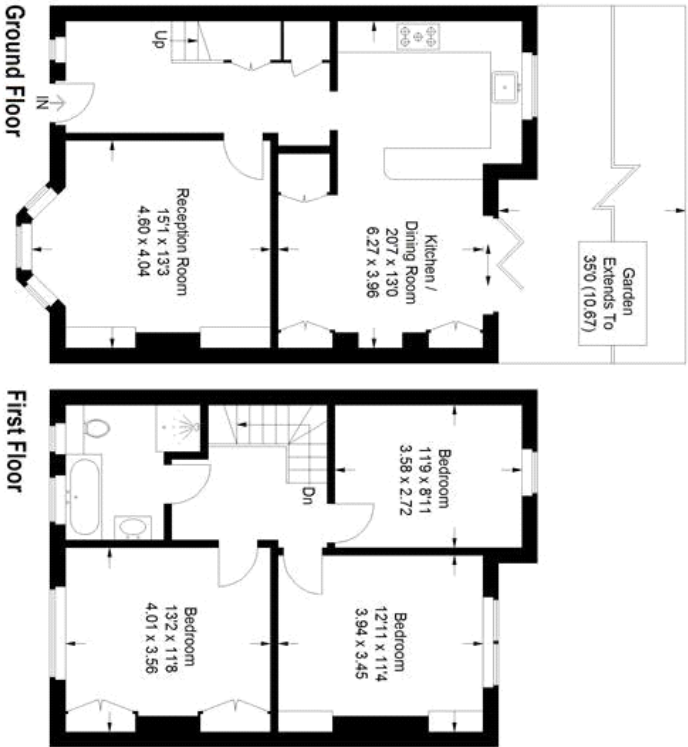
- Sophisticated 3 double bedroom Edwardian family home
- South facing rear garden
- Generous entrance hall
- Close to amenities and a selection of ar...
- Cosy front reception room with period features
- Stylish kitchen dining room
- Luxurious family bathroom with separate shower
- Approx 200 meters of Honor Oak Park stat...

ALPS Estates Ltd trading as Pickwick Estates  
47 Honor Oak Park Honor Oak  
London, SE23 1EA, United Kingdom  
Reg No : 7444750  
Registered in England

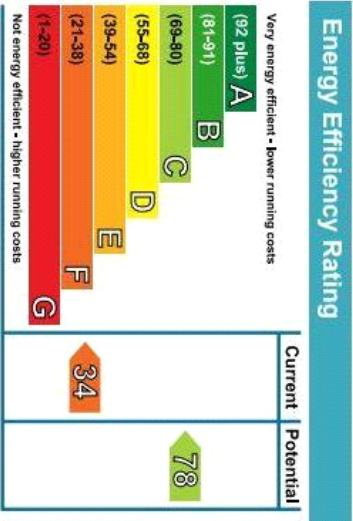
Telephone : 020 3397 1166  
Website : <https://www.pickwickestates.co.uk>



Tatnell Road



Approximate Gross Internal Area  
1154 sq ft / 107.2 sq m  
Illustration for identification purposes only.  
measurements are approximate.  
Drawn for Pickwick Estates



For Full EPC Information, click [here](#)