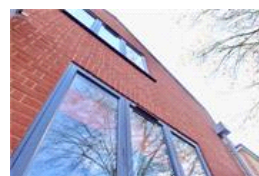
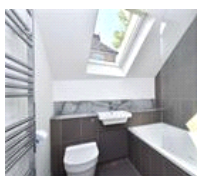
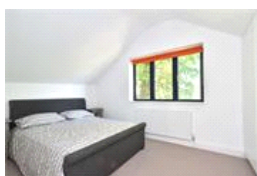
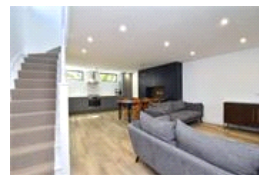
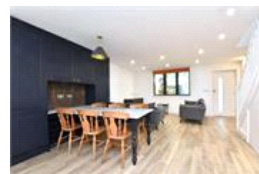


Turney Road , SE21 (2 bedroom House)

£750,000



property description

A spectacular new build, two bedroom DETACHED freehold house in the heart of Dulwich. You don't get these coming up very often! The house is beautifully styled to a high specification throughout, offering ingenious storage solutions, well laid out accommodation and it meets current building regulations standards such as high quality insulation and double glazing throughout. The red brick facade with dark grey window frames and a Zinc roof gives this house a striking look. Upon approach to the house is a large fence leading to a charming courtyard front garden which has been paved in natural stone tiles. Upon entry to the house through a solid grey contemporary door there is a...

property features

- New build 2 double bedroom house
- Detached freehold house
- Underfloor heating throughout
- Double glazing throughout
- Stylish open planned kitchen with integrated appliances
- Luxurious bathroom
- Front courtyard patio

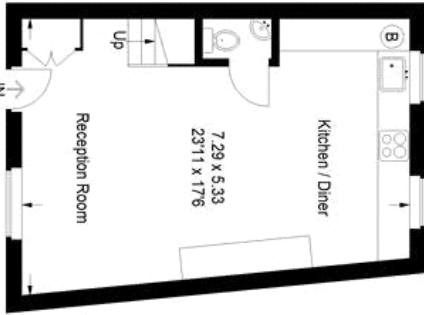
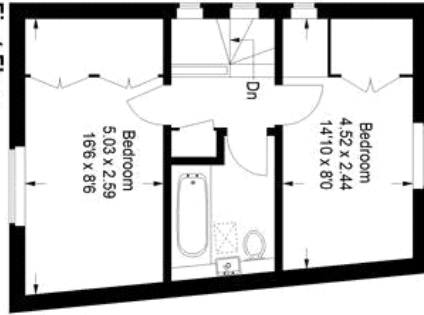
ALPS Estates Ltd trading as Pickwick Estates
47 Honor Oak Park Honor Oak
London, SE23 1EA, United Kingdom
Reg No : 7444750
Registered in England

Telephone : 020 3397 1166
Website : <https://www.pickwickestates.co.uk>



Turney Road , SE21 (2 bedroom House) £750,000

Turney Road



Approximate Gross Internal Area
71 sq m / 764 sq ft
Illustration for identification purposes only,
measurements are approximate.
Drawn for Pickwick Estates



For Full EPC information, click [here](#)