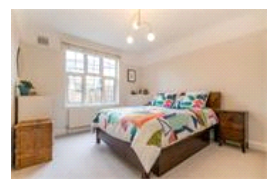
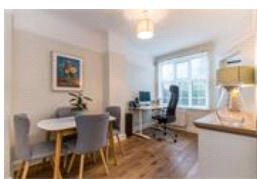
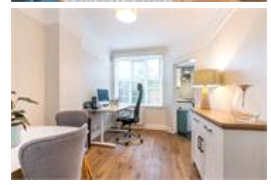


Brockley Rise, SE23 (2 bedroom House)

£505,000 (OIEO)



property description

An utterly charming two-bedroom, two reception room, garden maisonette with a West facing garden, conveniently located on this quiet residential street, close to Honor Oak Park and Crofton Park stations. The flat is well presented throughout with nice features such as solid wood floors in the hallway, reception and dining room, plenty of built-in storage, double glazed windows throughout, a working fireplace and a neatly landscaped WEST facing rear garden. The lounge is a good size, with windows to the front that are furnished with plantation shutters, solid wood floors, a working fireplace as a centre piece and shelving in the alcoves. Adjacent to the rear of the flat is a separ...

property features

- Charming 2 double bedroom maisonette
- WEST facing private, landscaped rear garden
- Nicely decorated throughout with solid wooden flooring in the reception rooms
- Well equipped kitchen
- Double glazing throughout
- Reception room with plantation shutters
- Dining room
- Fully tiled bathroom

ALPS Estates Ltd trading as Pickwick Estates
47 Honor Oak Park Honor Oak
London, SE23 1EA, United Kingdom
Reg No : 7444750
Registered in England

Telephone : 020 3397 1166
Website : <https://www.pickwickestates.co.uk>





For Full EPC information, click [here](#)