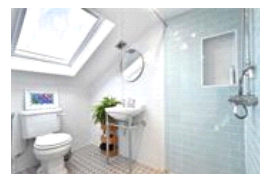
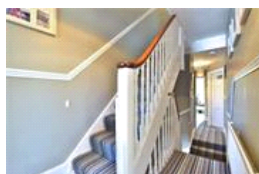
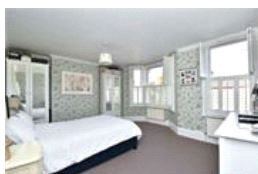
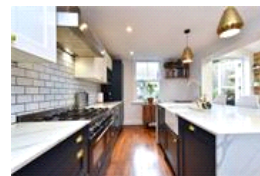
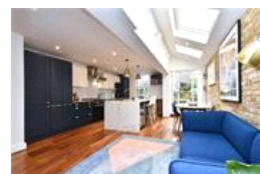
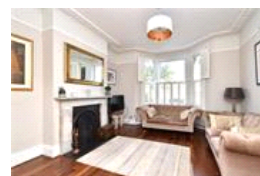


Gairloch Road, SE5 (5 bedroom House)

£1,000,000 (OIEO)



property description

Beautifully presented 5 bedroom Victorian family home with plenty of period features and a South facing garden, located on this quiet residential street next to the bustling centres of Peckham and Camberwell. Conveniently equidistant between Peckham Rye Station for regular and Overground services and the very well-connected Denmark Hill Station. The street has recently had the benefit of convenient on-street permitted parking introduced, which makes parking outside the house very easy. The house has charming kerb appeal with a typically ornate Victorian façade dominated by large sash bay windows and raised ground floor steps leading to the front door. The house is set back from the str...

property features

- Beautifully presented 5 bedroom Victorian family home
- Located on a quiet residential street close to amenities
- South facing, landscaped private rear garden
- Stunning kitchen dining room
- Double reception room
- Large master bedroom

ALPS Estates Ltd trading as Pickwick Estates
8 Woodwarde Road Dulwich
London, SE22 8UJ, United Kingdom
Reg No : 4270797
Registered in England

Telephone : 020 3397 1144
Website : <https://www.pickwickestates.co.uk>



