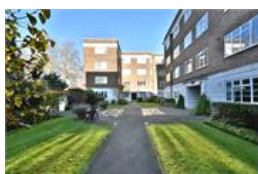
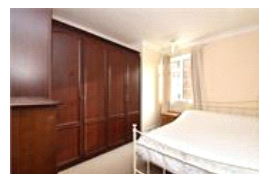


Dartmouth Court, SE10 (1 bedroom Flat)

£1,200/month



**Photo
coming
soon**

**Photo
coming
soon**

**Photo
coming
soon**

property description

A tastefully decorated, cosy one-bedroom apartment in an art deco building overlooking the open expanse of Blackheath. The property is neutrally decorated throughout and comes fully, part or unfurnished. It has new double-glazed windows in keeping with the building and a security intercom system. The kitchen and bathroom have been recently renovated. The communal gardens are beautifully landscaped, and the open spaces of Greenwich Park and Blackheath village are on your doorstep. Dartmouth Court is conveniently located for transport with Lewisham Mainline and DLR, Greenwich Main Line and DLR and Blackheath Main Line with links to Canary Wharf and Bank or trains to London Bridge, Canon St...

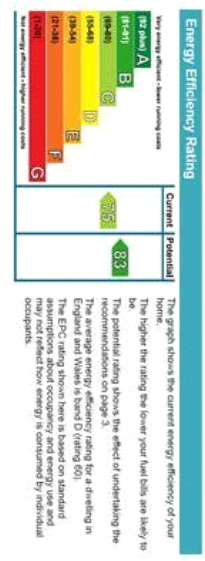
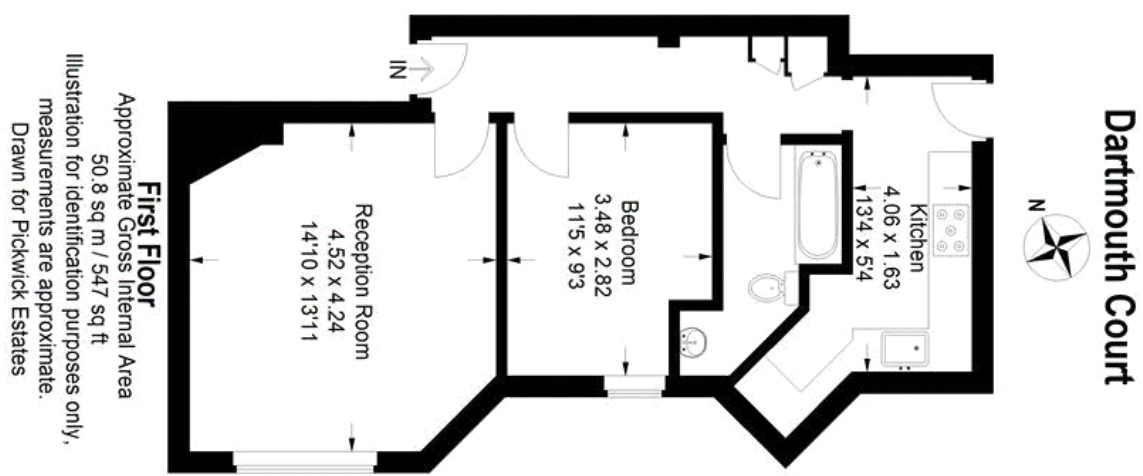
property features

- Large 1 bedroom flat
- Furnished/ part furnished
- Intercom system
- Overlooking the open expanse of Blackheath
- Conveniently located for transport with Lewisham Mainline & DLR
- Available Now

ALPS Estates Ltd trading as Pickwick Estates
8 Woodward Road Dulwich
London, SE22 8UJ, United Kingdom
Reg No : 4270797
Registered in England

Telephone : 020 3397 1144
Website : <https://www.pickwickestates.co.uk>





For Full EPC information, click [here](#)