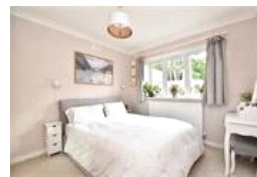


Gabriel Street , SE23 (2 bedroom Flat)

£525,000 (Guide Price)



property description

GUIDE PRICE £500k - £525k. Occupying the whole of the ground floor of this end of terrace Victorian house on this quiet residential street, is this wonderful 2 double bedroom flat with a private SOUTH facing rear garden with side return access and double glazing throughout. The property is located at the Brockley Rise end of Gabriel street, which is a no through road, meaning that there is hardly any passing traffic but is still conveniently accessible to the local amenities on foot. The house has nice kerb appeal with an exposed red brick façade with detailed masonry around the windows and entrance porch. The house is set back from the street by a fenced front garden with a path leading...

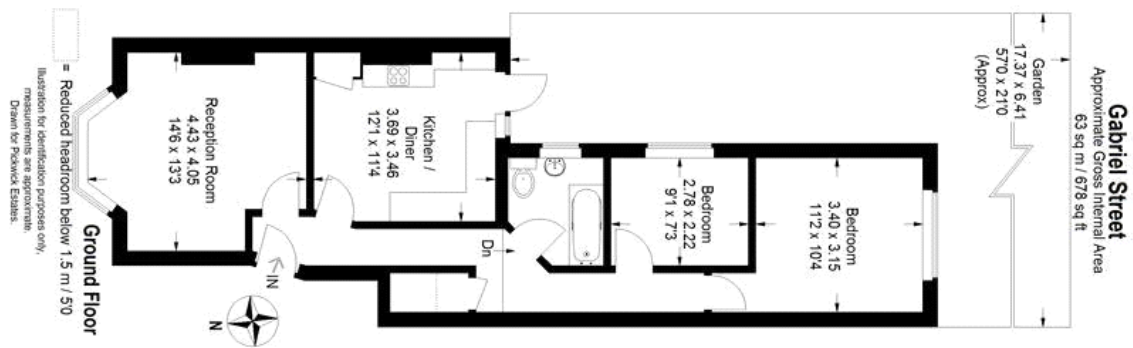
property features

- Lovely 2 double bedroom ground floor garden flat
- Neatly landscaped SOUTH facing private rear garden with side return access
- End of terrace Victorian conversion
- Wide side return with potential to extend
- Cosy reception room with plenty of period features
- Kitchen breakfast room
- Bathroom with shower above the bathtub
- Large storage shed and workshop/office w

ALPS Estates Ltd trading as Pickwick Estates
47 Honor Oak Park Honor Oak
London, SE23 1EA, United Kingdom
Reg No : 7444750
Registered in England

Telephone : 020 3397 1166
Website : <https://www.pickwickestates.co.uk>





For Full EPC Information, click [here](#)