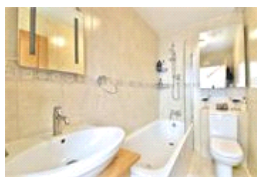
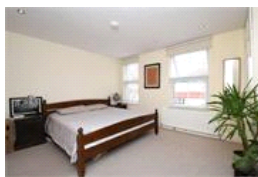
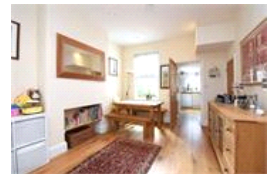


Blythe Hill Lane, SE6 (4 bedroom House)

£725,000 (OIEO)



property description

OPEN DAY SATURDAY 1ST FEBRUARY. Utterly charming 4 bedroom family home with a south facing garden in this lovely Victorian Terrace. Blythe Hill Lane is a peaceful cul de sac leading directly to the green open spaces of Blythe Hill fields - great for weekend activities in the park! For those looking for a support network, there is also a fantastic diverse multi-generational community on this street, who have an email and WhatsApp group, share tools and advice, support each other with childcare and hold annual street parties. . The house has been well maintained by the current owner with great curb appeal from a lovely low maintenance front garden. Inside is just as impressive - a lovely d...

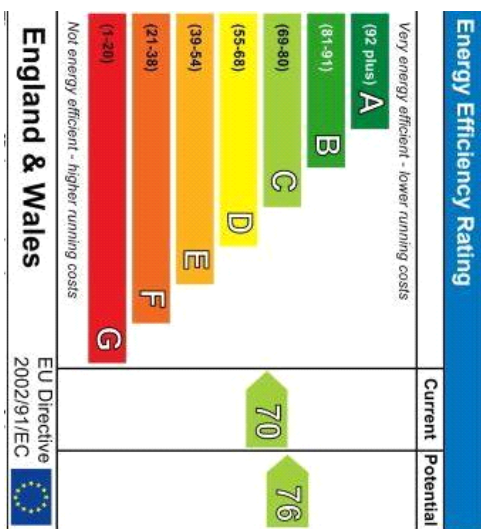
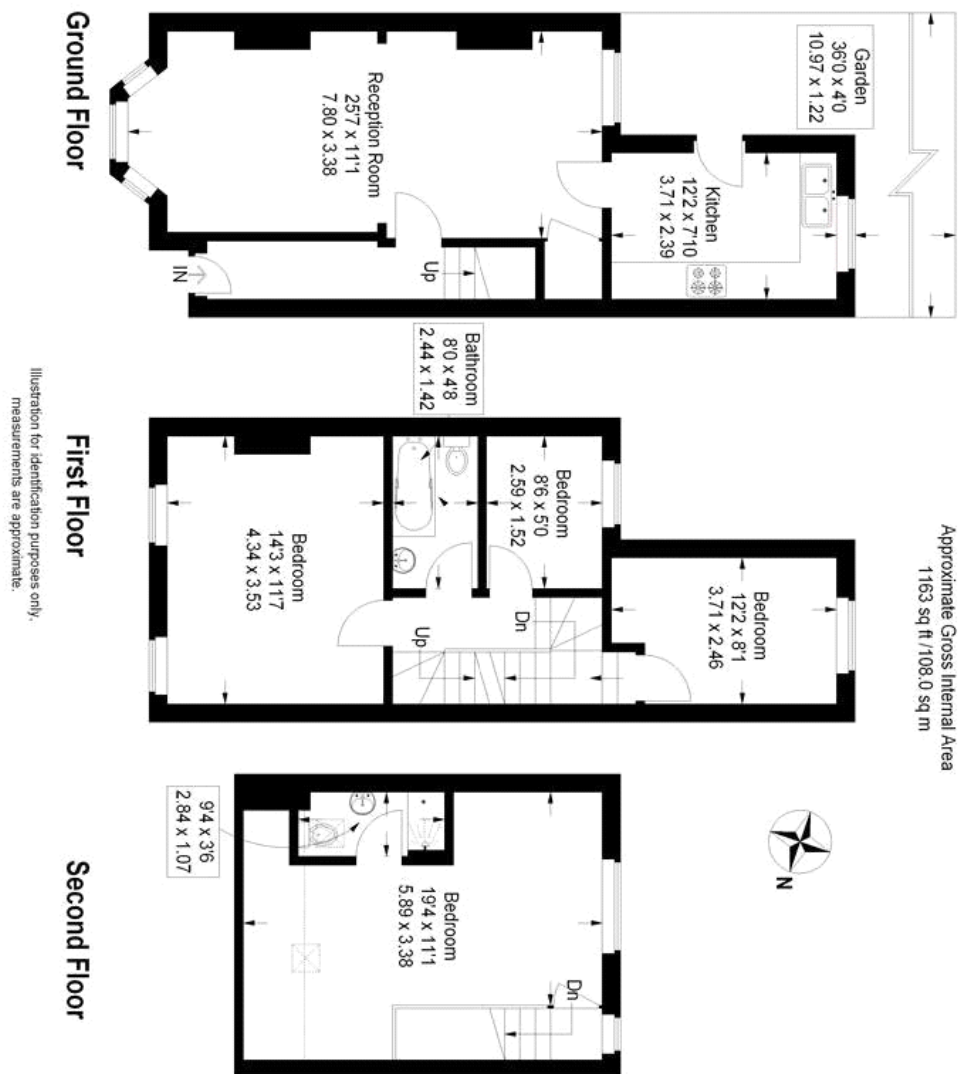
property features

- 4 bedroom Victorian family home
- Quiet cul-de-sac with a great family community
- Double reception room with dining area
- Family bathroom and en-suite bathroom
- Fully fitted Kitchen
- Sunny SOUTH facing garden with a shed
- Green open space of Blythe Hill Lane at the end of the road
- Nearest stations are Catford 0.37 miles

ALPS Estates Ltd trading as Pickwick Estates
47 Honor Oak Park Honor Oak
London, SE23 1EA, United Kingdom
Reg No : 7444750
Registered in England

Telephone : 020 3397 1166
Website : <https://www.pickwickestates.co.uk>





For Full EPC information, click [here](#)