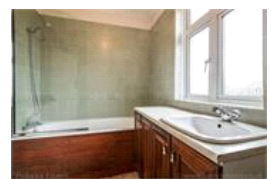
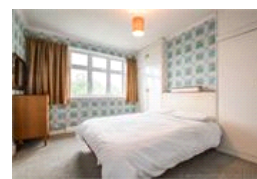
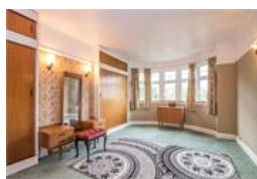
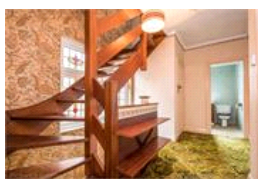
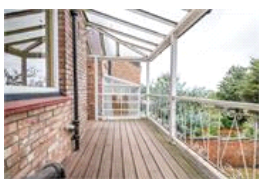
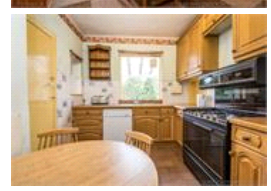
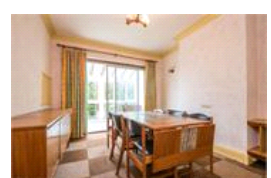


Canonbie Road , SE23 (4 bedroom House)

£1,000,000



## property description

OPEN DAY SATURDAY 5th SEPTEMBER. Perched on the popular Canonbie Road, offering stunning views over the London Skyline, is this large semi-detached, 1930's 4 bedroom family home with off street parking, integrated garage and large 100 ft private rear garden. The house is in need of modernisation and offers huge potential for anyone looking for a project to put their own stamp on a property. The house is set back from the street by a walled front garden with a driveway leading to the garage that is set to the side. The property benefits from over 2000 sq ft of floor space, double glazing throughout and working central heating, it has an impressive red brick façade with bay windows and an ...

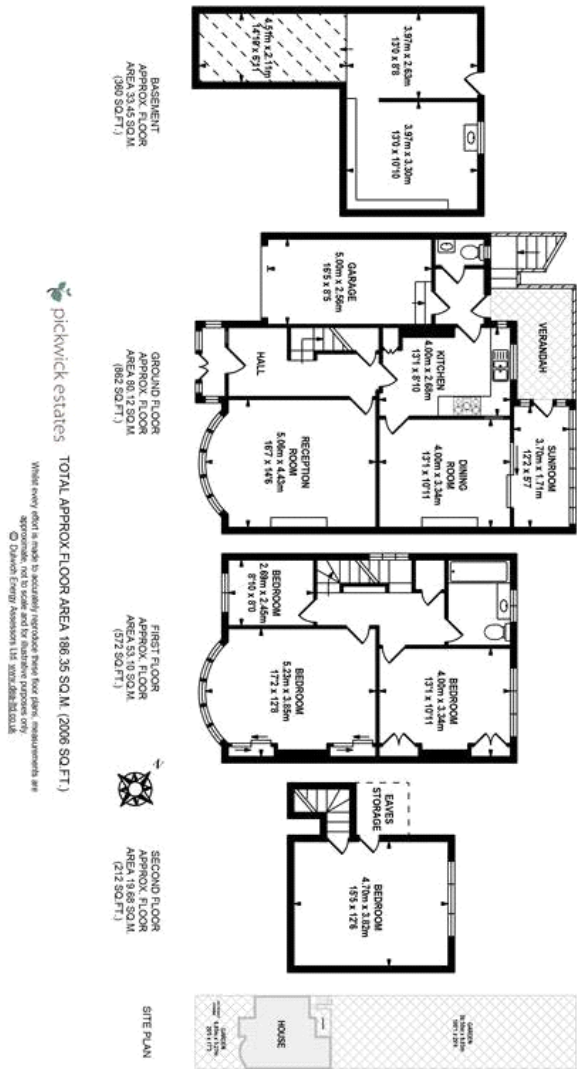
## property features

- 4 bedroom semi detached 1930's family home
- 2000 sqft (186 sqm) of internal floor space
- Huge potential, requiring modernisation
- Veranda and 100 ft private rear garden
- Off street parking and a garage
- Two reception rooms
- Kitchen breakfast room
- Spectacular views of the London Skyline

ALPS Estates Ltd trading as Pickwick Estates  
47 Honor Oak Park Honor Oak  
London, SE23 1EA, United Kingdom  
Reg No : 7444750  
Registered in England

Telephone : 020 3397 1166  
Website : <https://www.pickwickestates.co.uk>





For Full EPC information, click [here](#)