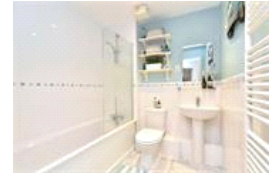


Hayes Grove , SE22 (1 bedroom Flat)

£375,000



## property description

Set on the ground floor of this popular modern development in East Dulwich is this lovely spacious one bedroom flat. This bright apartment has a large double bedroom, a main bathroom, semi open planned kitchen to a large reception room. The property benefits from double-glazing throughout, views and access to communal gardens and an allocated parking space. Hayes Grove is an established and particularly-peaceful residential development of both flats and townhouses; it's located just off leafy and residential Victorian terraces of Copleston Road - in prime Peckham Rye/East Dulwich borderland. East Dulwich Station is a 4 minute walk, while Peckham Rye Station is a 14 minute one. Bellenden Road and Lordship Lane are both a 10 minute stroll for shops, pubs, cafes, restaurants etc. Leasehold. In a shared main door (secure entry) the communal hallway leads to your own front door. The internal bathroom is the first room to your right. This has a simple white suite with modern fittings and an over bath shower with glass screen. There is also a good size storage cupboard next to the bat...

## property features

- Lovely one bedroom apartment in this popular modern block
- Allocated parking
- Views and access to communal garden
- Double glazing throughout
- Spacious reception room
- Main bathroom
- Semi open planned modern kitchen
- Secure entry system

ALPS Estates Ltd trading as Pickwick Estates  
47 Honor Oak Park Honor Oak  
London, SE23 1EA, United Kingdom  
Reg No : 7444750  
Registered in England

Telephone : 020 3397 1166  
Website : <https://www.pickwickestates.co.uk>



## Hayes Grove

Approximate Gross Internal Area = 49.6 sq m / 534 sq ft

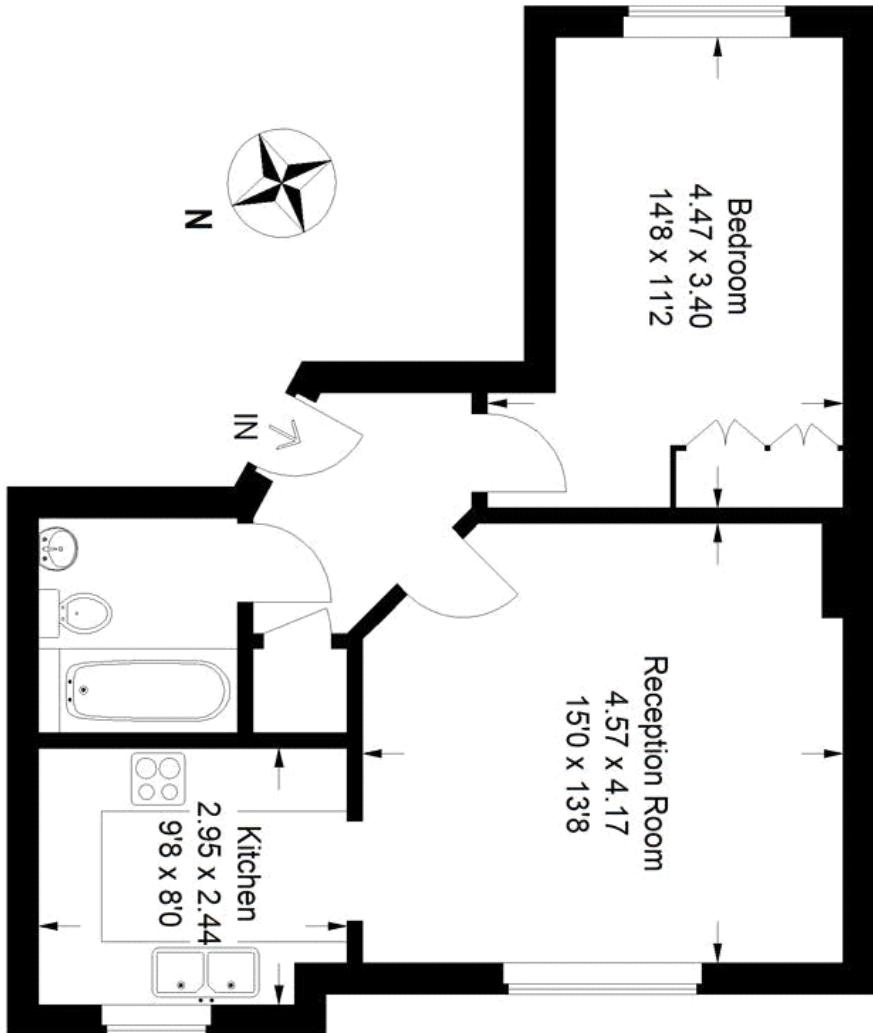


Illustration for identification purposes only,  
measurements are approximate.  
Drawn for Pickwick Estates

For Full EPC Information, click [here](#)