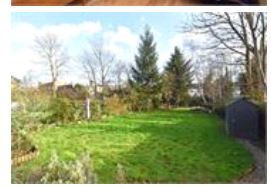
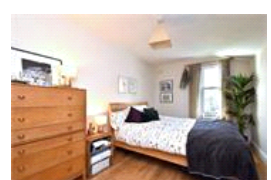
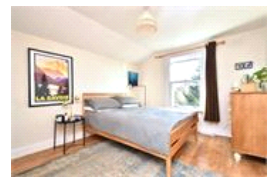


Sunderland Road, SE23 (2 bedroom Flat)

£1,850/month



**Photo
coming
soon**

**Photo
coming
soon**

**Photo
coming
soon**

**Photo
coming
soon**

**Photo
coming
soon**

property description

SHORT LET. Available now, bills included. UNFURNISHED. Set on the 1st floor of this stunning double fronted Victorian semi-detached house is this well-proportioned 2 bedroom flat with access to a well maintained private garden. The garden is currently shared communally for the benefit of all owners. The property is well located LESS THAN HALF A MILE walk to Forest Hill station where there are regular services to London Bridge and Overground connections. Upon approach to the house it is hard to ignore the imposing facade of ornate stone working around the door and windows, set on yellow old stock brickwork. Through an arched porch is a large front door leading to the communal hallway. ...

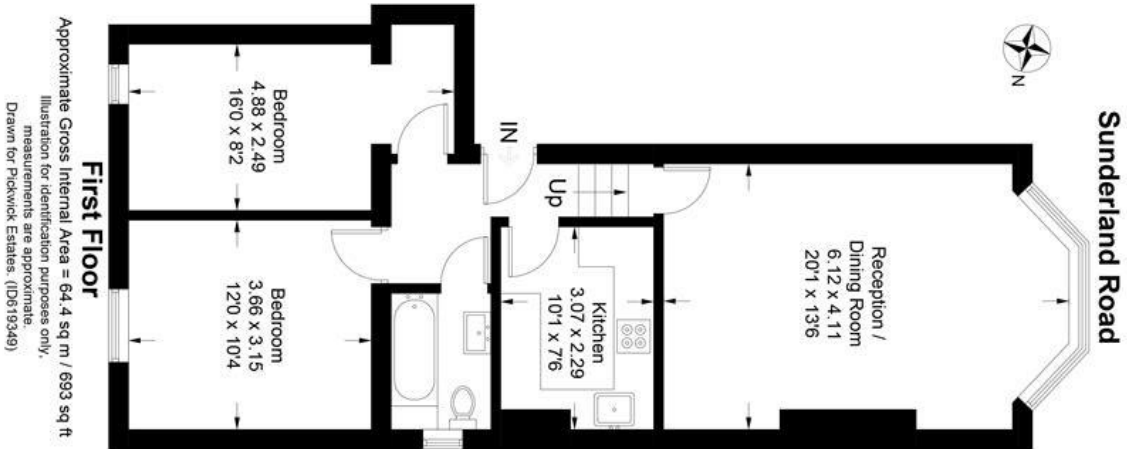
property features

- Well proportioned 2 double bedroom 1st floor flat
- Double fronted Victorian semi detached house
- Private share of large garden
- Double glazing throughout
- Fitted kitchen
- Close to Forest Hill station
- Generous front reception room
- Close to the amenities of Forest Hill

ALPS Estates Ltd trading as Pickwick Estates
8 Woodwarde Road Dulwich
London, SE22 8UJ, United Kingdom
Reg No : 4270797
Registered in England

Telephone : 020 3397 1144
Website : <https://www.pickwickestates.co.uk>





| Energy Efficiency Rating | | |
|---|---------|-----------|
| Very energy efficient - lower running costs | Current | Potential |
| A (92 plus) | | |
| B (81 - 91) | | |
| C (69 - 80) | | |
| D (55 - 68) | 66 | 69 |
| E (39 - 54) | | |
| F (21 - 38) | | |
| G (1 - 20) | | |
| Not energy efficient - higher running costs | | |
| England & Wales | | |
| EU Directive 2002/91/EC | | |
| | | |

For Full EPC Information, click [here](#)