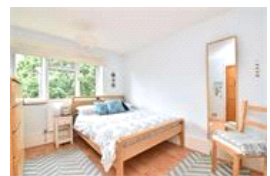
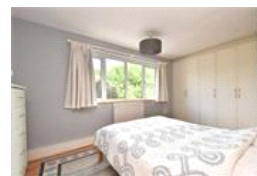
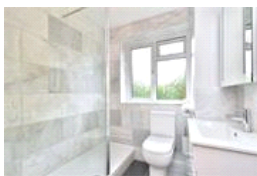
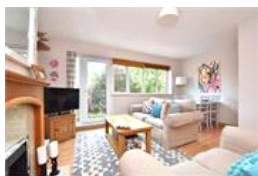
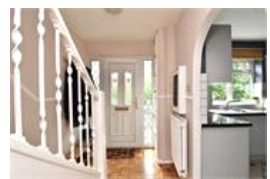


Longfield Crescent, SE26 (2 bedroom Flat)

£375,000



property description

Located on the borders of Forest Hill and Sydenham is this lovely split level, 2 double bedroom maisonette on the second and third floor of this well maintained mid-century purpose-built building. The property is located on this quiet cul-de-sac overlooking a neatly maintained communal garden with un-allocated off-street parking and the flat comes with its own beautifully landscaped private garden. The flat offers a generous amount of floor space, 722 sqft (67.1 sqm) of well laid out living accommodation with the kitchen and living room on the first floor and bedrooms and bathroom located on the top floor. The property also benefits from having double glazing throughout. The property ...

property features

- Well proportioned 2 double bedroom maisonette
- Second and third floor of a well maintained mid century purpose built building
- Private landscaped rear garden
- Quiet cul-de-sac
- Good size kitchen with integrated appliances
- South facing reception overlooking the communal gardens though large windows and a

ALPS Estates Ltd trading as Pickwick Estates
47 Honor Oak Park Honor Oak
London, SE23 1EA, United Kingdom
Reg No : 7444750
Registered in England

Telephone : 020 3397 1166
Website : <https://www.pickwickestates.co.uk>





For Full EPC Information, click [here](#)