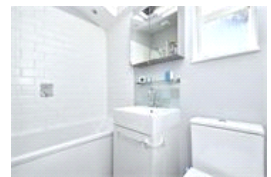
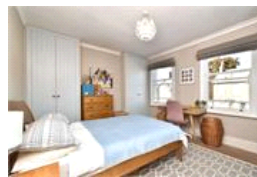
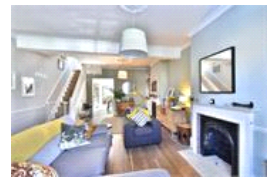


Cornflower Terrace, SE22 (3 bedroom House)

£950,000



property description

Prepare to be amazed by this superb 3 bedroom Victorian terraced family home located on this quiet residential street in the heart of East Dulwich. The house has undergone a transformation with the whole of the ground floor remodeled to create a huge open planed kitchen dining room extension at the rear with bi fold doors leading to the SOUTH WEST facing rear garden and a spacious double reception room at the front. The house offers great kerb appeal, set back from the street by a neatly landscaped walled front garden with a hedge of olive trees and mature shrubs, the house has a striking rendered facade with a bay sash window on the ground floor and two sash windows above on the first....

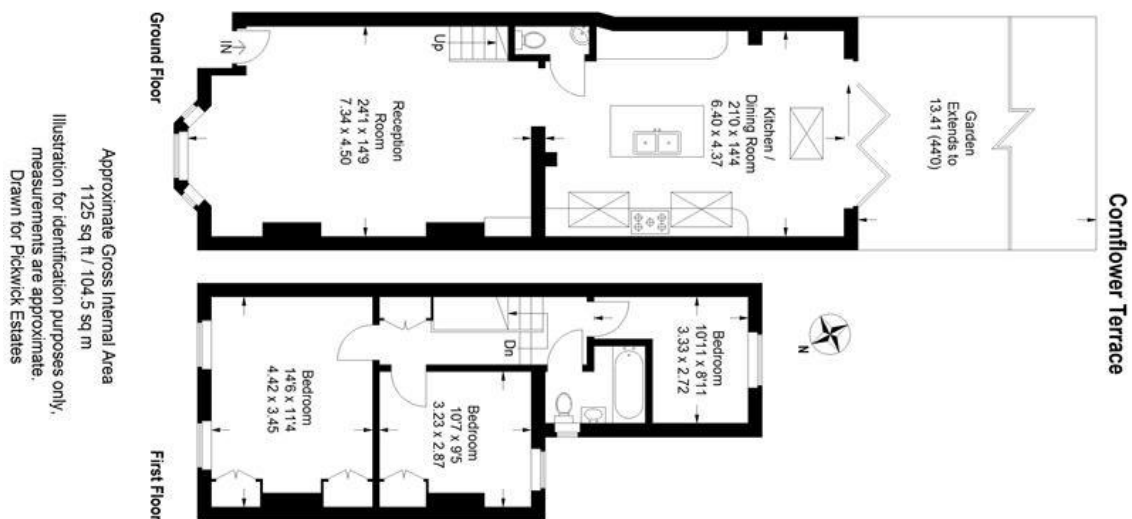
property features

- Superb 3 double bedroom Victorian family home
- SOUTH WEST facing landscaped rear garden
- Huge wrap around kitchen dining room extension with bi-fold doors leading to the garden
- Family bathroom
- Double glazed sash windows with plantation shutters in the reception
- Double reception room with oak flooring and Victorian fireplaces
- Downstairs WC

ALPS Estates Ltd trading as Pickwick Estates
47 Honor Oak Park Honor Oak
London, SE23 1EA, United Kingdom
Reg No : 7444750
Registered in England

Telephone : 020 3397 1166
Website : <https://www.pickwickestates.co.uk>





For Full EPC information, click [here](#)