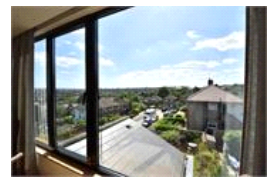
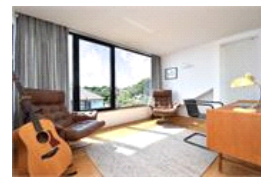
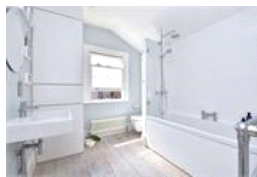
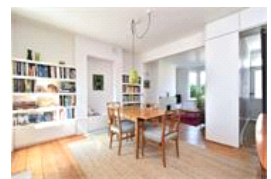


Blythe Hill Lane, SE6 (3 bedroom House)

£750,000



## property description

Interior designed by architects is this superb 3-bedroom family home with a south facing garden located on this lovely Victorian Terrace. Blythe Hill Lane is a peaceful cul de sac leading directly to the green open spaces of Blythe Hill fields - great for weekend activities in the park! For those looking for a support network, there is also a fantastic diverse multi-generational community on this street, who have an email and WhatsApp group, share tools and advice, support each other with childcare and hold annual street parties. The house has been completely remodeled by the current owners and offers great curb appeal from its exposed brick facade set behind a lovely low maintenance, wa...

## property features

- Superb 3 bedroom family home
- Architecturally designed and interior decorated
- Victorian period terrace
- SOUTH facing rear garden
- Double glazed wooden framed windows throughout
- Double reception room
- Kitchen breakfast room
- Luxurious family bathroom

ALPS Estates Ltd trading as Pickwick Estates  
47 Honor Oak Park Honor Oak  
London, SE23 1EA, United Kingdom  
Reg No : 7444750  
Registered in England

Telephone : 020 3397 1166  
Website : <https://www.pickwickestates.co.uk>





Energy Efficiency Rating		
Very energy efficient - lower running costs	Current	Potential
A (92 plus)		
B (81-91)		
C (69-80)		
D (55-68)	58	62
E (39-54)		
F (21-38)		
G (1-20)		
Not energy efficient - higher running costs		
England & Wales	EU Directive 2002/91/EC	

For Full EPC information, click [here](#)