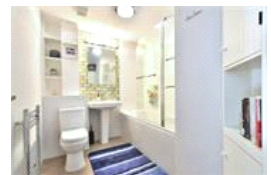


Brockley View , SE23 (4 bedroom House)

£650,000 (Guide Price)



property description

GUIDE PRICE £650,000 - £675,000. Perched near the top of Brockley View is this lovely mid terrace, 4-bedroom family home with amazing views over the green open spaces of Blythe Hill park and comes with private off-street parking. The house offers well laid out living accommodation that is very practical and functional, making it flexible to many different buyers. The house is set back from the street offering additional privacy and there is a handy front porch that gives access to the house. As you enter there is an entrance hall that has plenty of storage and a downstairs WC. The reception room at the back has been opened up at the back to create more open planned living area with a...

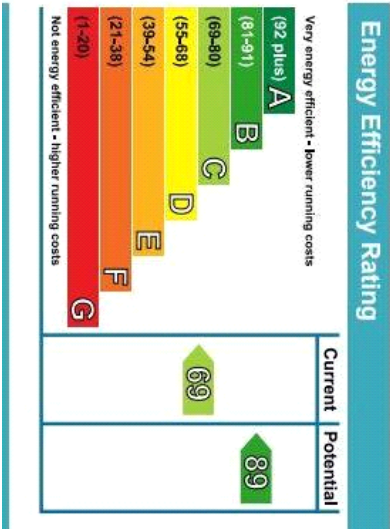
property features

- Lovely 4 bedroom mid terrace family home
- Well laid out accommodation,
- Kitchen dining room
- Off street parking
- Private rear garden with gate to communal gardens
- Family bathroom and downstairs WC
- Large reception room
- Close to highly rated primary schools su...

ALPS Estates Ltd trading as Pickwick Estates
47 Honor Oak Park Honor Oak
London, SE23 1EA, United Kingdom
Reg No : 7444750
Registered in England

Telephone : 020 3397 1166
Website : <https://www.pickwickestates.co.uk>





For Full EPC information, click [here](#)