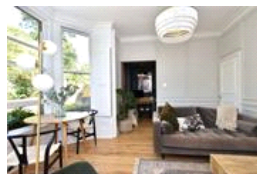
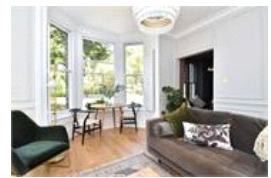


Lowther Hill, SE23 (1 bedroom Flat)

£400,000



property description

Beautifully presented one bedroom flat set on the raised ground floor of this spectacular detached Victorian double fronted villa. This impressive house has kerb appeal in abundance and it also backs on to communal garden that has direct access to a private residential park that is only accessible to residents. The flat also benefits from being sold with a SHARE OF FREEHOLD, impeccably decorated throughout, high ceilings throughout, plenty of period features, direct access to communal gardens. At the front of the property is the main bedroom which is dominated by a large bay sash window furnished with plantation shutters that fills the room with natural light and offers stunning views....

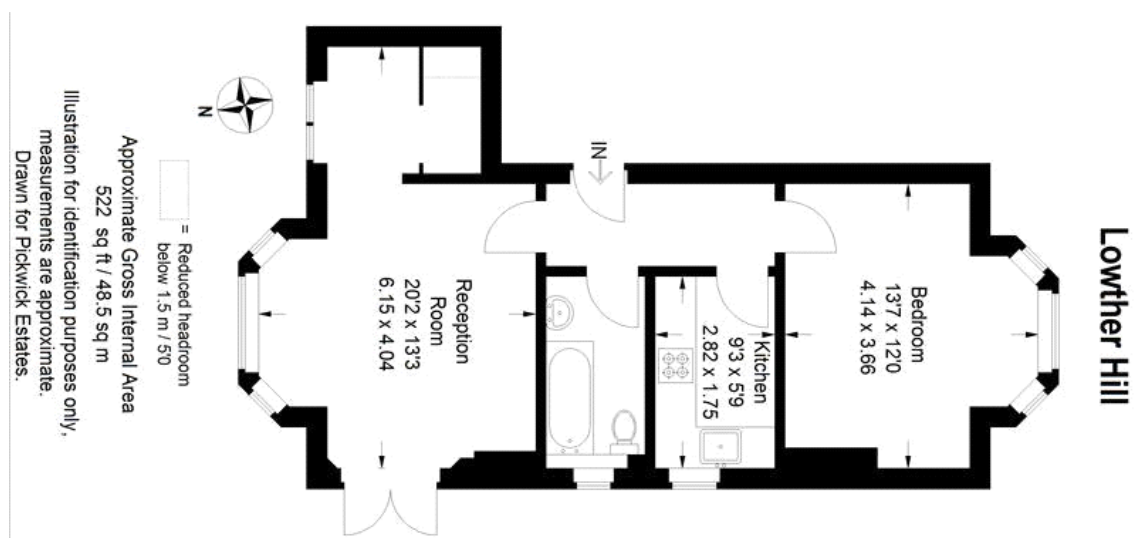
property features

- Beautifully presented one bedroom flat
- Raised ground floor of this spectacular detached Victorian double fronted villa
- Backs on to communal garden that has direct
- SHARE OF FREEHOLD
- High ceiling throughout and plenty of period features
- Recently renovated stylish kitchen

ALPS Estates Ltd trading as Pickwick Estates
47 Honor Oak Park Honor Oak
London, SE23 1EA, United Kingdom
Reg No : 7444750
Registered in England

Telephone : 020 3397 1166
Website : <https://www.pickwickestates.co.uk>





For Full EPC information, click [here](#)