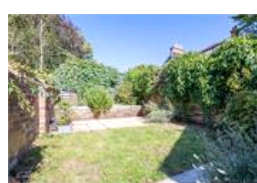
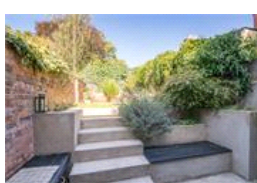
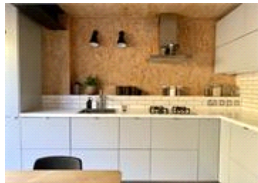
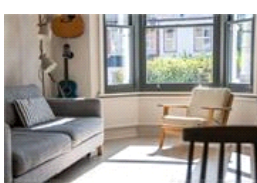
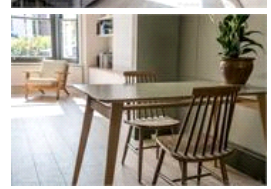
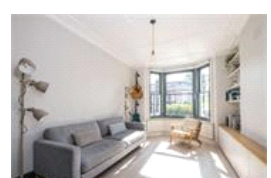
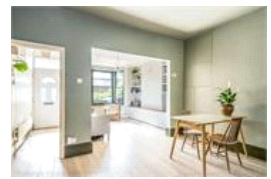
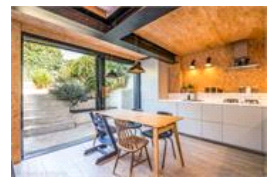


Ravensbourne Road, SE6 (2 bedroom House)

£625,000



property description

Stylish and elegantly designed, is this superb freehold 2 double bedroom Victorian end of terrace house, located in a quiet, popular residential street, close to the open green spaces of Blythe Hill fields, lots of local amenities as well as Honor Oak Park and Catford Bridge stations. The house is set back from the street offering nice kerb appeal with an imposing brick façade, bay windows with detailed masonry and a well-kept front garden with a pathway to the front entrance. Upon entry to the house there is an entrance hall that leads to the double reception room. The ground floor has been opened up to create a lovely living space, with high ceilings, original cornicing, stylish blea...

property features

- Stylish 2 bedroom Victorian terrace house
- Architecturally designed kitchen breakfast room extension
- Landscaped private rear garden
- Stylish double reception room
- Double glazing throughout
- Quiet residential street
- Plenty of character and period features

ALPS Estates Ltd trading as Pickwick Estates
47 Honor Oak Park Honor Oak
London, SE23 1EA, United Kingdom
Reg No : 7444750
Registered in England

Telephone : 020 3397 1166
Website : <https://www.pickwickestates.co.uk>



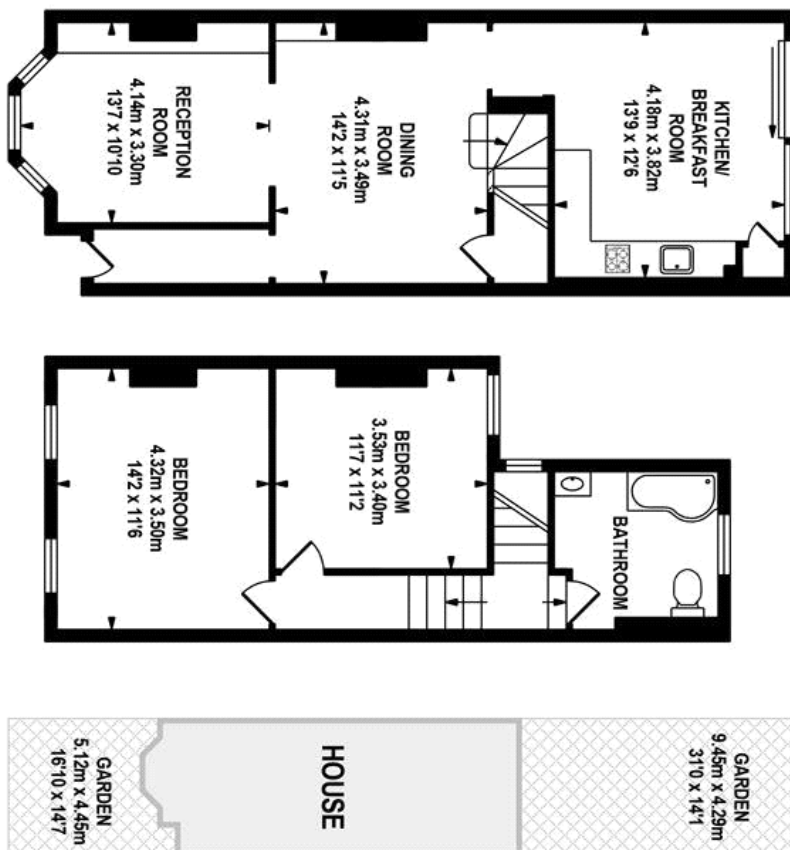


GROUND FLOOR
APPROX. FLOOR
AREA 51.63 SQ.M.
(556 SQ.FT.)



FIRST FLOOR
APPROX. FLOOR
AREA 40.07 SQ.M.
(431 SQ.FT.)

SITE PLAN



TOTAL APPROX. FLOOR AREA 91.70 SQ.M. (987 SQ.FT.)

Whilst every effort is made to accurately reproduce these floor plans, measurements are approximate, not to scale and for illustrative purposes only.

© Dulwich Energy Assessors Ltd. www.dea-ltd.co.uk

For Full EPC Information, click [here](#)