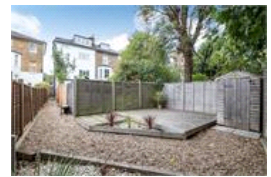
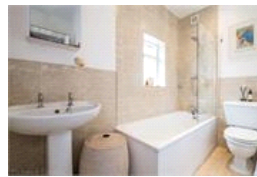
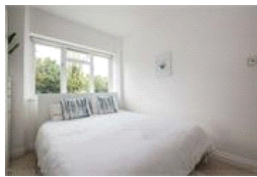
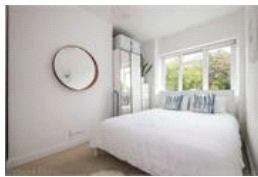
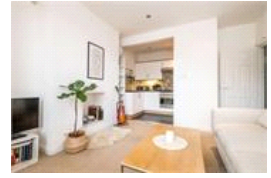
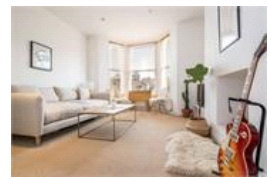
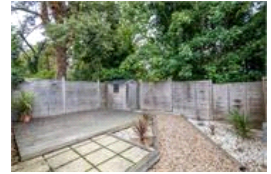
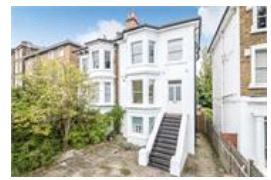


Devonshire Road, SE23 (1 bedroom Flat)

£355,000 (OIEO)



## property description

Beautifully presented one-bedroom flat, set on the raised ground floor of this spectacular semi-detached Victorian stucco fronted villa. This impressive house has kerb appeal in abundance and it also benefits from its own PRIVATE LANDSCAPED REAR GARDEN, double glazing throughout, off street parking and is being sold with a SHARE OF FREEHOLD. Raised ground floor steps lead up to the front entrance of the building where there is a well-maintained communal entrance hall. At the front of the property is the main reception room which is dominated by a large floor to ceiling bay sash window furnished with shutters that fills the room with natural light and offers stunning views straight u...

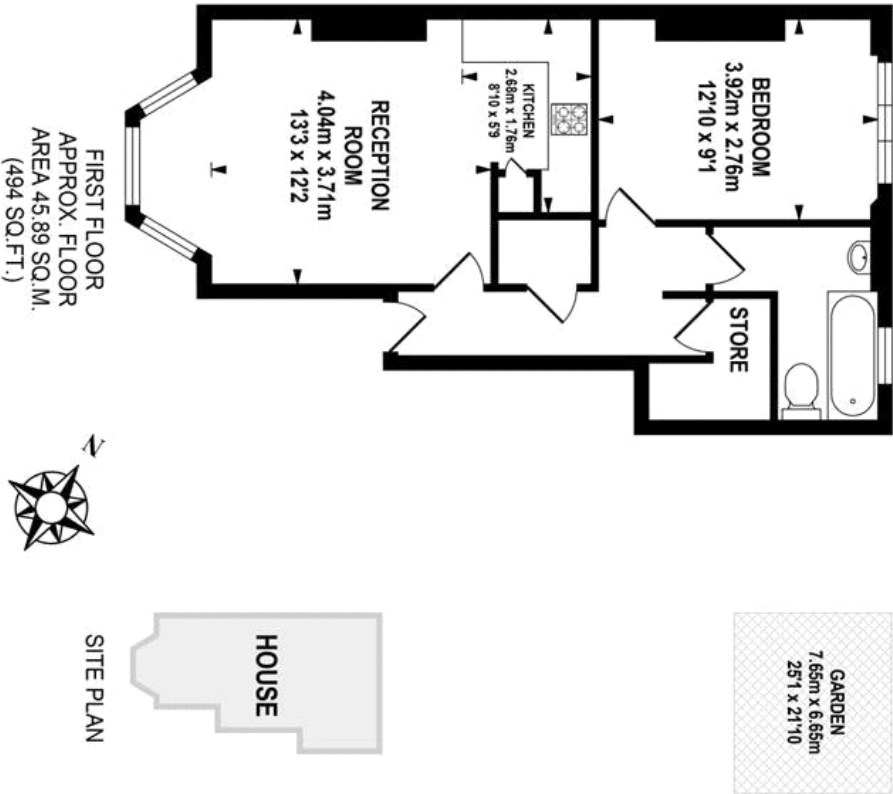
## property features

- Beautifully presented one-bedroom flat
- PRIVATE REAR GARDEN
- Raised ground floor of a stunning stucco fronted Victorian semi detached villa
- Bathroom
- SHARE OF FREEHOLD
- Reception room with high ceilings and a large bay window
- Semi open planned kitchen
- Double glazing throughout

ALPS Estates Ltd trading as Pickwick Estates  
47 Honor Oak Park Honor Oak  
London, SE23 1EA, United Kingdom  
Reg No : 7444750  
Registered in England

Telephone : 020 3397 1166  
Website : <https://www.pickwickestates.co.uk>





 **pickwick estates** **TOTAL APPROX.FLOOR AREA 45.89 SQ.M. (494 SQ.FT.)**

Whilst every effort is made to accurately reproduce these floor plans, measurements are approximate, not to scale and for illustrative purposes only.

© Dulwich Energy Assessors Ltd. [www.dea-lltd.co.uk](http://www.dea-lltd.co.uk)

| Score | Energy rating | Current | Potential |
|-------|---------------|---------|-----------|
| 92+   | <b>A</b>      |         |           |
| 81-91 | <b>B</b>      |         |           |
| 69-80 | <b>C</b>      | 75   C  | 80   C    |
| 55-68 | <b>D</b>      |         |           |
| 39-54 | <b>E</b>      |         |           |
| 21-38 | <b>F</b>      |         |           |
| 1-20  | <b>G</b>      |         |           |

For Full EPC information, click [here](#)