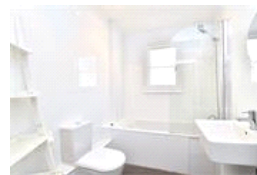
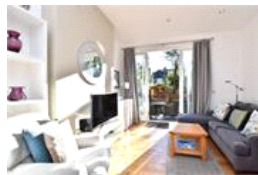
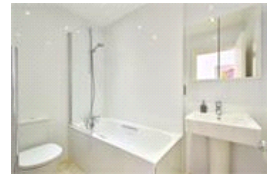
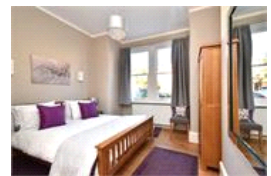


Beauval Road , SE22 (4 bedroom House)

£1,325,000 (OIEO)



## property description

A fantastic opportunity to purchase the freehold of this stunning red brick Victorian terraced house on this popular residential street in the heart of Dulwich. The house has been fully refurbished and converted to create two flats, both in excellent decorative order in Farrow & Ball colours, offering two bedrooms within each. The ground floor has sole use and direct access to a SOUTH facing landscaped rear garden. The house is in excellent condition, set back from the street by a small front garden, the red brick period facade has detailed masonry surrounding the windows and a porch protects the entrance and doorway to the property. Both flats are being sold in excellent condition wit...

## property features

- INVESTMENT OPPORTUNITY to purchase the freehold of this stunning Victorian terraced house in Dulwich
- Converted into two separate flats offered in excellent decorative condition
- First Floor; two bedroom flat with a SOUTH facing kitchen breakfast room with a Juliette balcony
- Stylish bathrooms
- Fully fitted modern kitchens

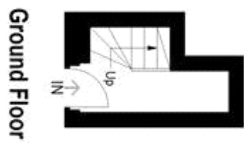
ALPS Estates Ltd trading as Pickwick Estates  
47 Honor Oak Park Honor Oak  
London, SE23 1EA, United Kingdom  
Reg No : 7444750  
Registered in England

Telephone : 020 3397 1166  
Website : <https://www.pickwickestates.co.uk>

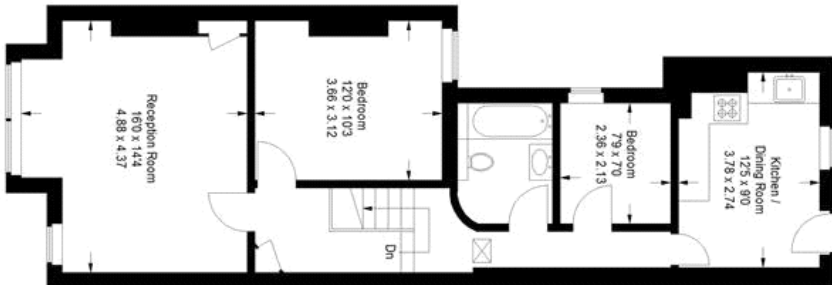




**Ground Floor**  
Approximate Gross Internal Area  
618 sq ft / 67.4 sq m




**Ground Floor**



**First Floor**  
Approximate Gross Internal Area  
727 sq ft / 67.5 sq m

Illustration for identification purposes only,  
measurements are approximate.  
Drawn by Pickwick Estates.

Energy Efficiency Rating		
Very energy efficient - lower running costs		
(92 plus) <b>A</b>		
(81-91) <b>B</b>		
(69-80) <b>C</b>		
(55-68) <b>D</b>	63	69
(39-54) <b>E</b>		
(21-38) <b>F</b>		
(1-20) <b>G</b>		
Not energy efficient - higher running costs		
England & Wales		EU Directive 2002/91/EC 

For Full EPC Information, click [here](#)