

Ringmore Rise , SE23 (4 bedroom House)

£975,000



**Photo
coming
soon**

**Photo
coming
soon**

**Photo
comin
soon**

property description

Perched on top Ringmore Rise with stunning views over the London Skyline is this unique DETACHED 4 bedroom family home with off street parking, and large 50 ft private rear garden. This charming cottage style house has an impressive façade with a light blue painted brickwork and delightful original wooden framed windows. The house is set back from the street with a driveway that slopes down towards the property and surrounded by a lawn bordered by mature trees and shrubs. The entrance to the house is covered by a tiled roof porch with a contemporary front door that gives access to the building. As you enter the house there is a generous entrance hall which has lovely solid oak floo...

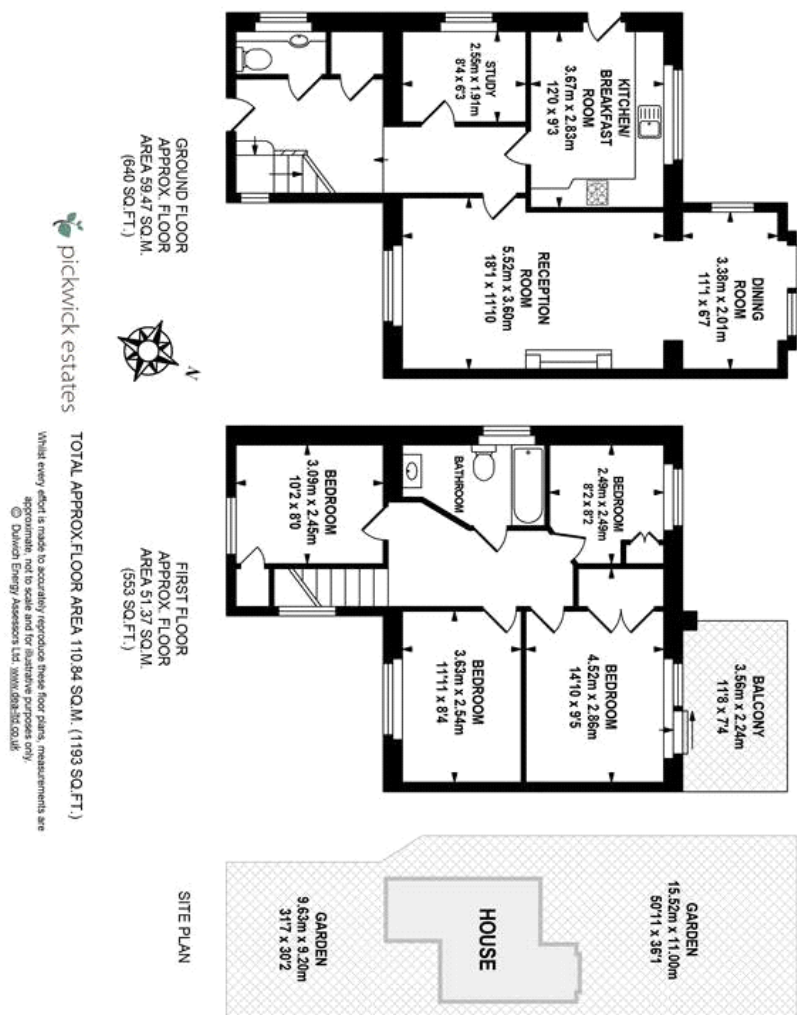
property features

- DETACHED 4 bedroom cottage style house
- 50ft private rear garden and a roof terrace off the main bedroom
- Front garden and driveway
- Reception room and dining room
- Stunning views over the London skyline
- Permission granted for a double story rear and side extension
- Kitchen breakfast room
- Downstairs WC and study

ALPS Estates Ltd trading as Pickwick Estates
47 Honor Oak Park Honor Oak
London, SE23 1EA, United Kingdom
Reg No : 7444750
Registered in England

Telephone : 020 3397 1166
Website : <https://www.pickwickestates.co.uk>





For Full EPC information, click [here](#)