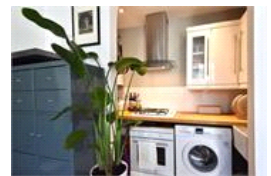


Montem Road , SE23 (Studio)

£850/month



## property description

Offered to the market in excellent condition is this lovely studio flat on the ground floor of this stunning Victorian semi detached house on this quiet residential street. The flat benefits from its own front door, a healthy lease, double glazed sash bay windows and SOLE USE OF A FRONT GARDEN PATIO. The building has great kerb appeal in classic Victorian style, London stock bricks accompanied by large bay sash windows and detailed masonry. The house is set back from the street by a hedged front garden which the flat owns a share of, the current vendor has installed a picnic bench and table perfect for enjoying in the summer. Through the grand arched porch is the front door to the building which is also the entrance to the flat itself. Internally there is a good feeling of space with very high ceilings and plenty of natural light from the large bay sash window that over looks the front garden. These windows have been recently replaced in 2017 with double glazing, making the flat more insulated for both sound and heating. The kitchen is semi open planned, whilst compac...

## property features

- Lovely studio flat offered in excellent condition
- Set on the ground floor of a stunning Victorian period conversion
- Quiet residential one way street
- Large bay window
- Own front door
- SOLE USE OF PRIVATE PATIO GARDEN
- Recently fitted double glazed sash bay window (2017)
- Nice shower room with newly fitted showe...

ALPS Estates Ltd trading as Pickwick Estates  
47 Honor Oak Park Honor Oak  
London, SE23 1EA, United Kingdom  
Reg No : 7444750  
Registered in England

Telephone : 020 3397 1166  
Website : <https://www.pickwickestates.co.uk>



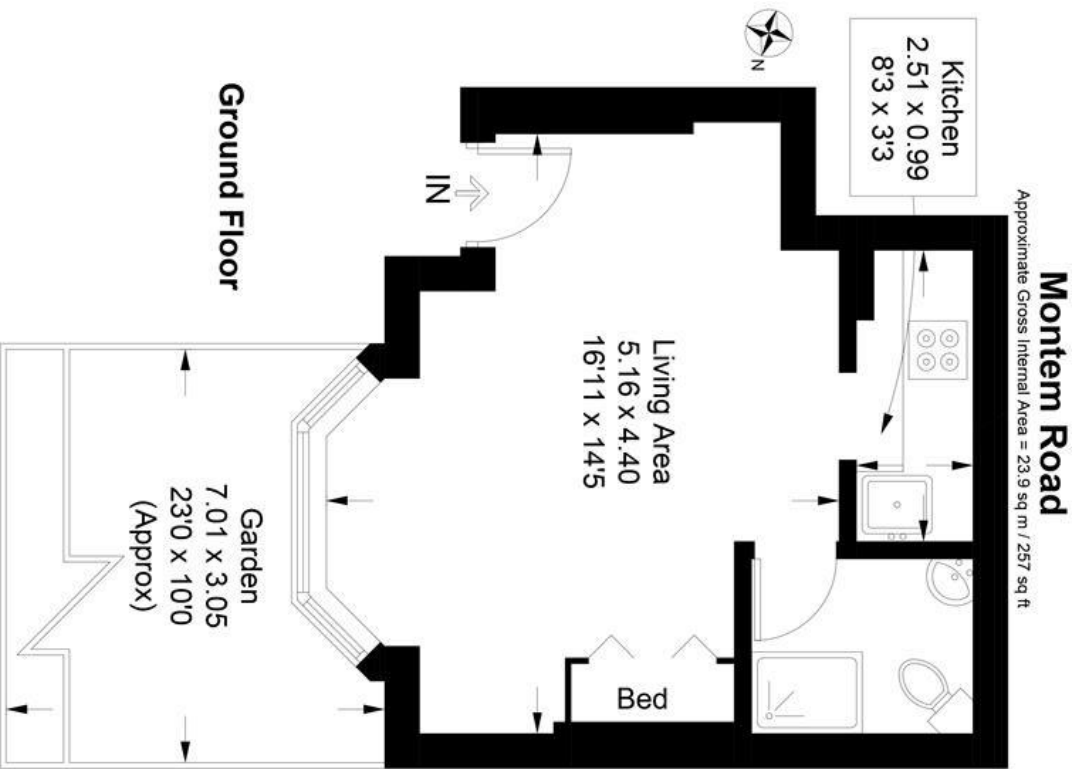


Illustration for identification purposes only,  
measurements are approximate.  
Drawn for Pickwick Estates



For Full EPC information, click [here](#)