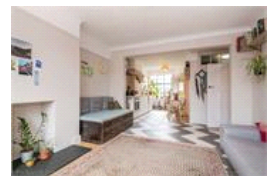


Stondon Park, SE23 (2 bedroom Flat)

£475,000



## property description

VIEWING AVAILABLE SATURDAY 29TH 10-12. A charming first floor 2 double bedroom garden maisonette in the heart of Honor Oak Park. Extremely well presented throughout, offering well laid out accommodation with open planned living, a private rear garden, engineered wooden flooring throughout and plenty of original features such as original Crittall Windows. The property offers well-proportioned living accommodation with over 800 sq ft (75 sqm) of floor space, practically laid out with the bedrooms on one side of the flat and an open planned kitchen reception on the other with the additional benefit of a utility room. Entrance to the flat is on the ground floor with its own entrance and steps leading up to the first floor where there is a generous landing. On the right side of the flat are the two double bedrooms, both are fairly equal in size, the larger of the two is at the front and has two large Crittall windows set behind secondary glazing which is a clever way of retaining the original features as well as insulating the property. The floors are engineered wood and there ...

## property features

- Charming first floor 2 DOUBLE bedroom maisonette
- SOUTH EAST facing private rear garden
- Open planned kitchen reception room
- 1930's building
- Offering over 800 sq ft (75 sqm)
- Utility room
- Stylish bathroom with shower over the bath
- Fully fitted kitchen

ALPS Estates Ltd trading as Pickwick Estates  
47 Honor Oak Park Honor Oak  
London, SE23 1EA, United Kingdom  
Reg No : 7444750  
Registered in England

Telephone : 020 3397 1166  
Website : <https://www.pickwickestates.co.uk>





For Full EPC information, click [here](#)



**TOTAL APPROX. FLOOR AREA 78.72 SQ.M. (848 SQ.FT.)**

Whilst every effort is made to accurately reproduce these floor plans, measurements are approximate, not to scale and for illustrative purposes only.  
© Dulwich Energy Assessors Ltd. [www.dea-hd.co.uk](http://www.dea-hd.co.uk)