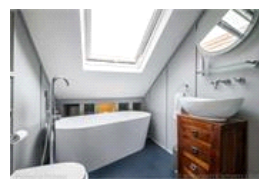
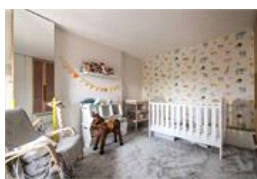
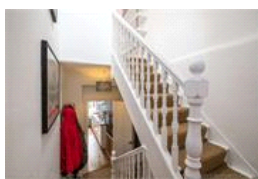
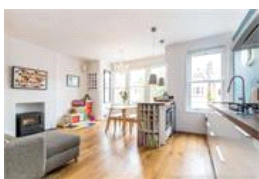
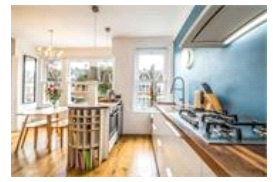
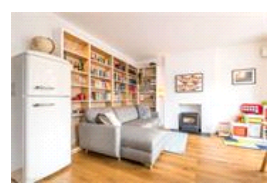
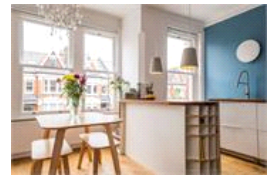


Elmwood Road, SE24 (2 bedroom Flat)

£685,000



property description

Offering generous proportions throughout (940 sq ft / 87.31 sqm), is this immaculately presented 2 double bedroom split level flat on the first and second floor of this handsome Victorian semi detached house in the heart of North Dulwich. It's hard not to be impressed by the imposing façade of the house with its detailed masonry set on a backdrop of red bricks and large square bay windows. The house is in excellent condition and set back from the street by a walled front garden and a pathway leading to the front entrance protected by an overhanging porch. Entrance to the flat is on the ground floor with steps leading up to the landing on the first floor which provides access to all are...

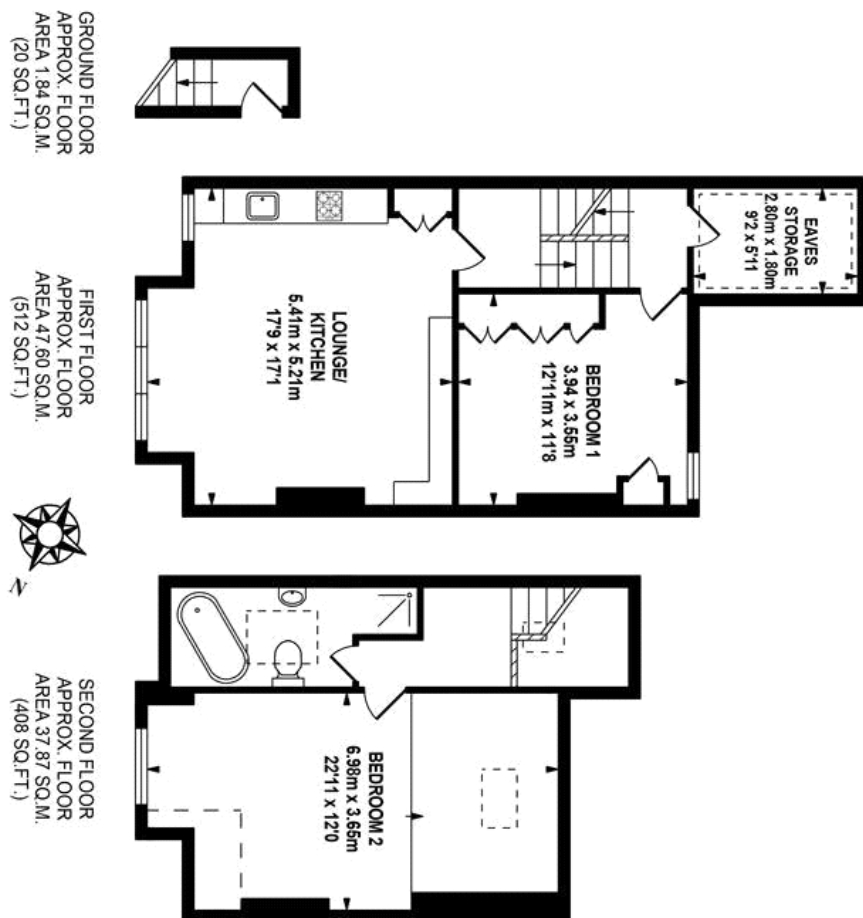
property features

- Immaculately presented large 2 double bedroom split level flat
- Offering generous proportions throughout (940 sq ft / 87.31 sqm)
- Victorian period conversion, plenty of storage
- Large kitchen reception room, approx. 17 ft x 17 ft (5.41m x 5.21m)
- Stylish modern kitchen
- Luxurious bathroom with separate walk in shower enclosure

ALPS Estates Ltd trading as Pickwick Estates
47 Honor Oak Park Honor Oak
London, SE23 1EA, United Kingdom
Reg No : 7444750
Registered in England

Telephone : 020 3397 1166
Website : <https://www.pickwickestates.co.uk>





 pickwick estates

Whilst every effort is made to accurately reproduce these floor plans, measurements are approximate, not to scale and for illustrative purposes only.

© Dulwich Energy Assessors Ltd. www.dea-ltd.co.uk

For Full EPC information, click [here](#)