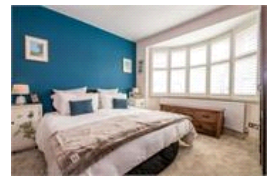
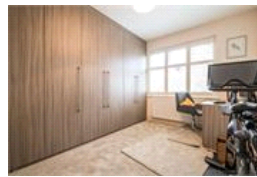
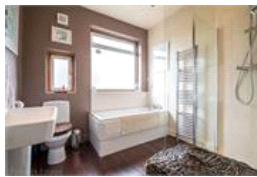
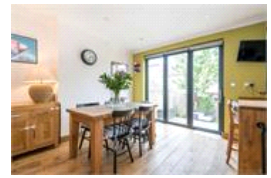


Tatnell Road , SE23 (3 bedroom House)

£775,000 (Guide Price)



property description

OPEN DAY SATURDAY 19th SEPTEMBER. GUIDE PRICE £775,000 - £800,000. Sat proudly on this popular quiet residential street in the heart of Honor Oak Park is this impeccably presented 3-bedroom 1930's end of terrace family home. The house has been opened at the rear to create a bright and spacious family home and still offers potential to extend into the loft (STTP). Located moments from all the convenient amenities the high street has to offer, Honor Oak Park station with excellent connections to London Bridge and the Overground as well as Crofton Park which has regular services via Thameslink to Blackfriars. The front of the house has an appealing façade with traditional curved bay win...

property features

- Beautifully presented 3 bedroom 1930's family home
- End of terrace house with side return access
- Potential to convert the loft
- Modern fitted kitchen
- Neatly landscaped private rear garden
- Cosy reception room
- Open planned kitchen dining room
- Stylish family bathroom

ALPS Estates Ltd trading as Pickwick Estates
47 Honor Oak Park Honor Oak
London, SE23 1EA, United Kingdom
Reg No : 7444750
Registered in England

Telephone : 020 3397 1166
Website : <https://www.pickwickestates.co.uk>

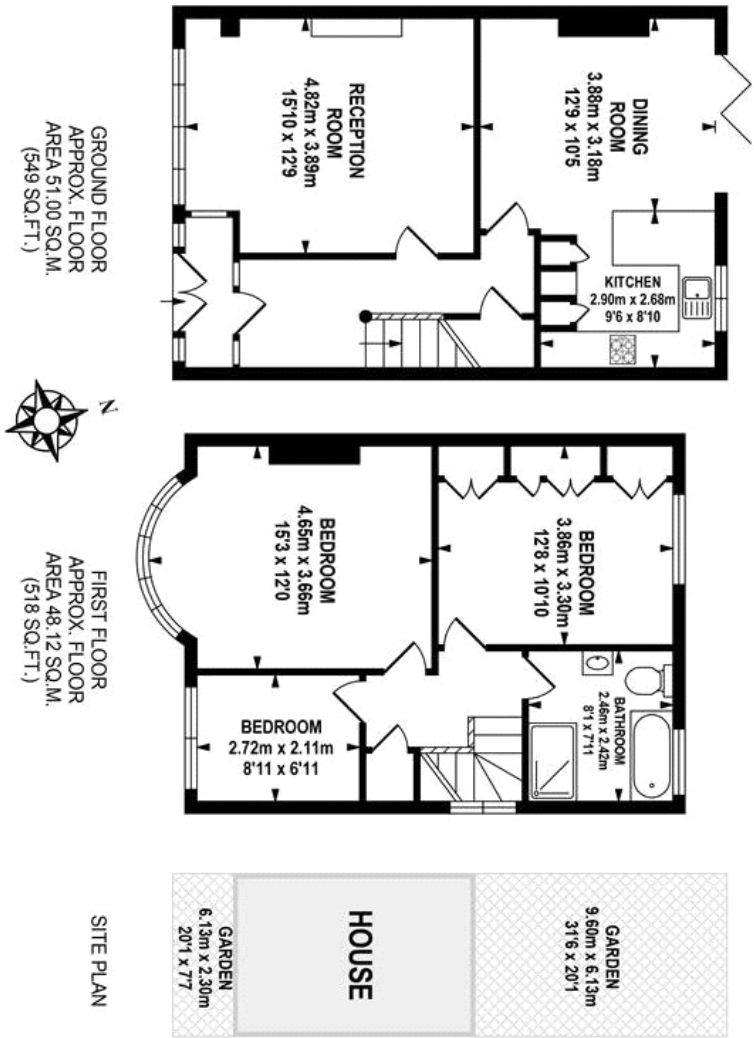




TOTAL APPROX.FLOOR AREA 99.12 SQ.M. (1067 SQ.FT.)

Whilst every effort is made to accurately reproduce these floor plans, measurements are approximate, not to scale and for illustrative purposes only.

© Dulwich Energy Assessors Ltd. www.dea-lltd.co.uk



For Full EPC information, click [here](#)