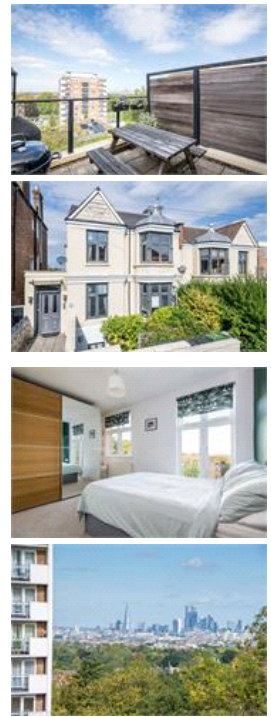


Canonbie Road , SE23 (2 bedroom Flat)

£375,000 (OIEO)



## property description

Beautifully presented two bedroom second floor flat with a large West facing private roof terrace offering spectacular views of the London Skyline! The property is located on Canonbie Road which is one of Forest Hill's premiere residential streets, offering a selection of excellent schools, good transportation links such as Honor Oak Park station (Overground and NR to London Bridge) and green open spaces such as Brenchley Gardens, Peckham Rye and Horniman Gardens with its famous museum. The flat is situated within a well-maintained building and offers well-proportioned accommodation, benefiting from double glazing throughout. Entrance to the flat can be found on the second floor. The flat is divided into two distinct areas with bedrooms and bathroom at the rear of the building and the Kitchen reception room set back with direct access to the terrace. The smaller bedroom is set to the side of the building with carpeted flooring and a window to the side for natural light and ventilation. The bathroom is fully tiled with a shower above the bath accompanied by a contempo...

## property features

- Lovely 2 bedroom second floor flat
- Amazing WEST facing roof terrace with spectacular view of the London skyline
- Catches the afternoon sunlight and great sunsets!
- Double glazing throughout
- Nice communal parts
- Well maintained building
- Open planned kitchen reception room
- Fully tiled bathroom with shower above t...

ALPS Estates Ltd trading as Pickwick Estates  
47 Honor Oak Park Honor Oak  
London, SE23 1EA, United Kingdom  
Reg No : 7444750  
Registered in England

Telephone : 020 3397 1166  
Website : <https://www.pickwickestates.co.uk>



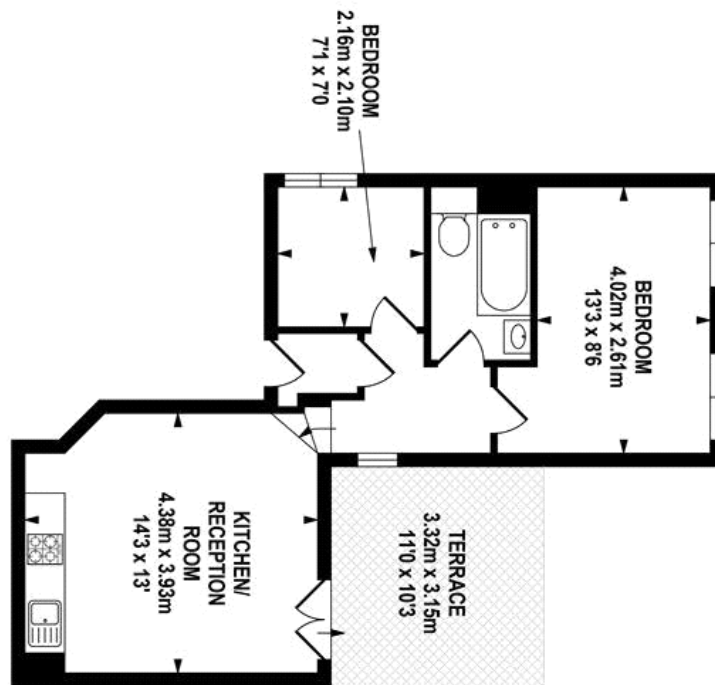


TOTAL APPROX.FLOOR AREA 42.26 SQ.M. (455 SQ.FT.)

Whilst every effort is made to accurately reproduce these floor plans, measurements are approximate, not to scale and for illustrative purposes only.  
© Dulwich Energy Assessors Ltd. www.dea-lld.co.uk



SECOND FLOOR  
APPROX. FLOOR  
AREA 42.26 SQ.M.  
(455 SQ.FT.)



For Full EPC information, click [here](#)