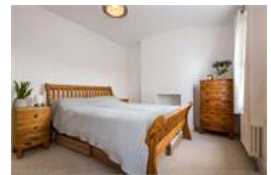
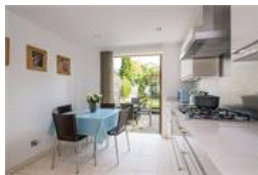


Waghorn Street, SE15 (5 bedroom House)

£1,150,000



property description

A beautifully enhanced five double bedroom, two-bathroom Victorian terraced family home with east-facing and part-walled, landscaped garden, on a pretty residential street that's just a five-minute walk from both Bellenden Road and Peckham Rye Station. Permit parking is on-street, for residents. Freehold. A small walled front garden with a grey sandstone path sets the house back from the pavement offering additional privacy. The exterior is a typical pretty Victorian façade with old London stock brickwork and a bay window on the ground floor with detailed masonry surrounding the sash windows. An inset porch protects the Victorian style door for those rainy days. The hallway leads throu...

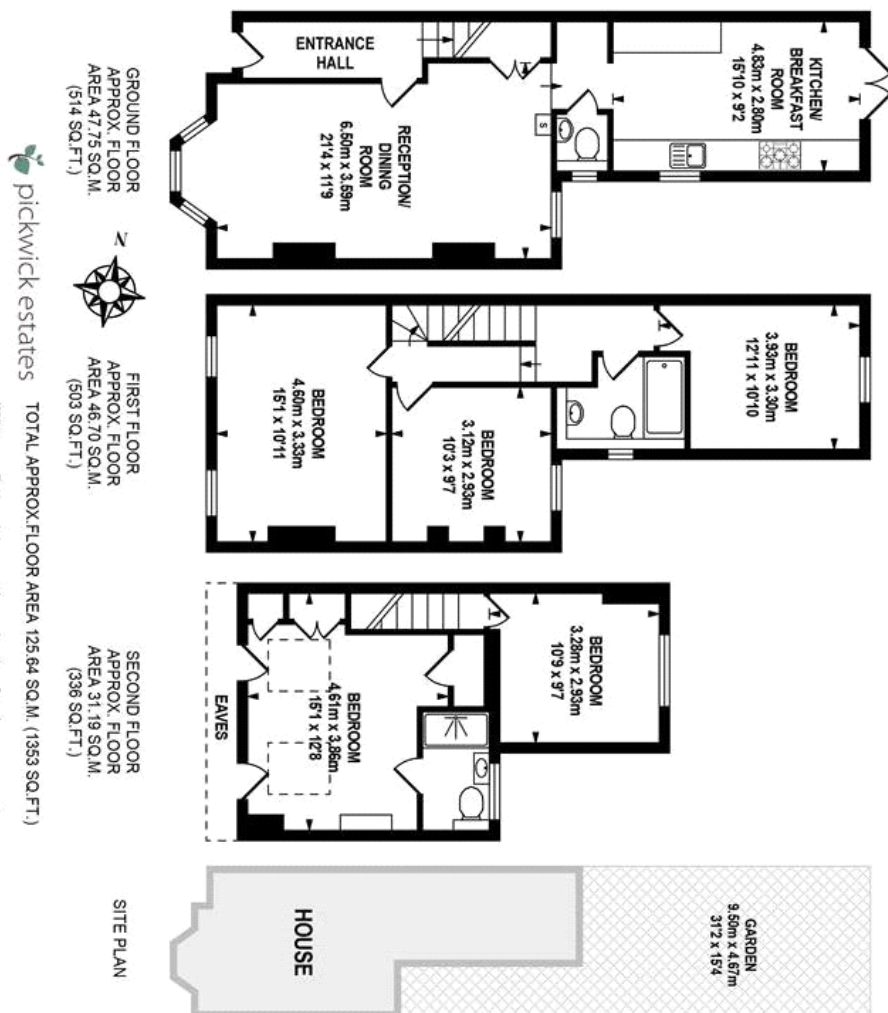
property features

- Beautifully enhanced 5 bedroom Victorian family home
- Located in the heart of Peckham
- Landscaped private rear garden and walled front garden
- Double reception room
- Kitchen dining room
- Family bathroom
- Stylish decor throughout

ALPS Estates Ltd trading as Pickwick Estates
47 Honor Oak Park Honor Oak
London, SE23 1EA, United Kingdom
Reg No : 7444750
Registered in England

Telephone : 020 3397 1166
Website : <https://www.pickwickestates.co.uk>





For Full EPC information, click [here](#)