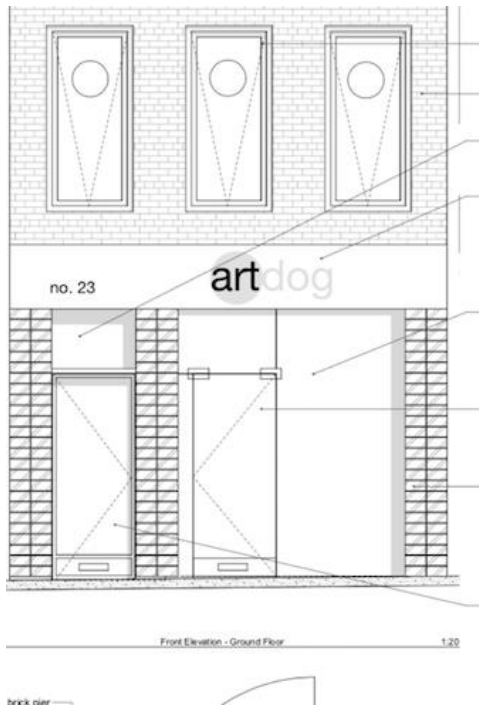


Brockley Rise , SE23 (1 bedroom Flat)

£335,000



**Photo  
coming  
soon**

**Photo  
coming  
soon**

**Photo  
coming  
soon**

**Photo  
coming  
soon**

**Photo  
coming  
soon**

**Photo  
coming  
soon**

**Photo  
coming  
soon**

**Photo  
coming  
soon**

**Photo  
coming  
soon**

## property description

Stunning new build one bedroom apartment. Available to buy now and add you own personal touches A contemporary and spacious one-bedroom architect designed flat currently under construction provides an opportunity for buyer input and is scheduled for completion in January 2020 The flat is one of three in the building and is situated above a contemporary art gallery that has been operating in the neighbourhood since 2000 [www.artdoglondon.co.uk](http://www.artdoglondon.co.uk) . Open plan, with large windows that offer views over southeast London, and a Juliet balcony in the bedroom which overlooks the gallery's sculpture courtyard. Convenient to shops and transport, this metropolitan space offers: A Magne...

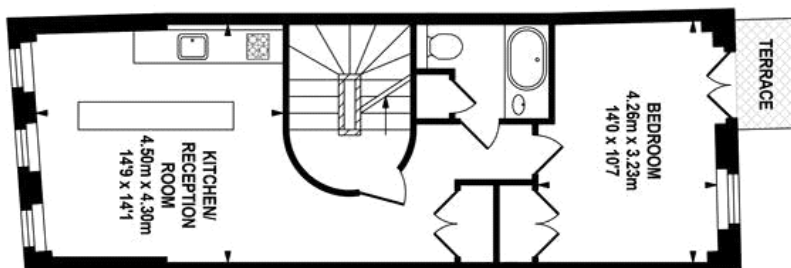
## property features

- New build one bedroom flat
- A Magnet kitchen with granite countertops
- Induction hob and electric stove
- Floor to ceiling windows in living space...
- A long lease.
- Walk in shower with rain shower
- Shared entrance and bicycle storage area
- Electric boiler only to comply with curr...

ALPS Estates Ltd trading as Pickwick Estates  
47 Honor Oak Park Honor Oak  
London, SE23 1EA, United Kingdom  
Reg No : 7444750  
Registered in England

Telephone : 020 3397 1166  
Website : <https://www.pickwickestates.co.uk>





FIRST FLOOR  
APPROX. FLOOR  
AREA 45.54 SQ.M.  
(490 SQ.FT.)

TOTAL APPROX. FLOOR AREA 45.54 SQ.M. (490 SQ.FT.)

Whilst every effort is made to accurately reproduce these floor plans, measurements are approximate, not to scale and for illustrative purposes only.  
©Dulwich Energy Assessors Ltd. www.dela.co.uk

For Full EPC information, click [here](#)