

Crawthrew Grove , SE22 (3 bedroom House)

£900,000 (Guide Price)



### property description

GUIDE PRICE £900k-£950k. Located within minutes of the hustle and bustle of Lordship Lane and North Cross Road, with East Dulwich station only 500 metres away, this charming 3 double bedroom Victorian mid-terraced family home with a private landscaped rear garden, is located on one of the most popular, yet quiet residential streets in the heart of East Dulwich. Set back from the street by a hedged front garden offering plenty of privacy, the house has an appealing façade of old stock bricks with a large bay window on the ground floor and detailed masonry surrounding the windows with a lovely arched porch protecting the Victorian front door. Upon entry, the entrance hall has lovely ...

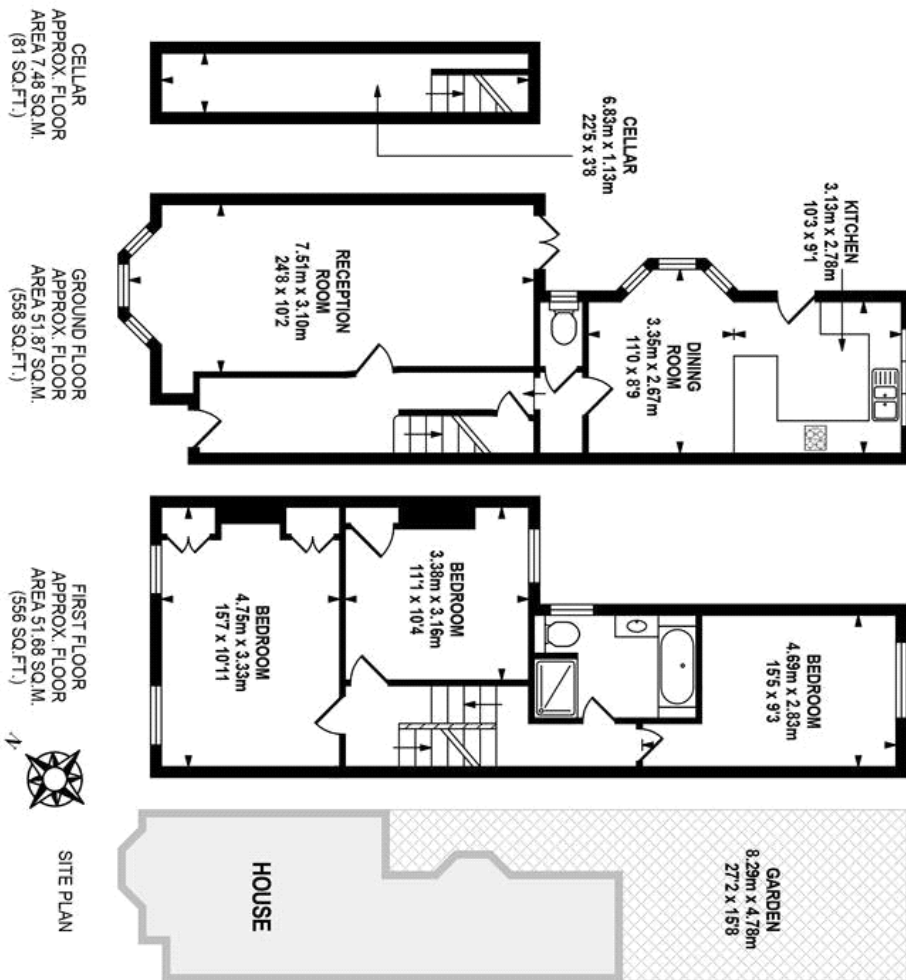
### property features

- Charming 3 double bedroom Victorian mid terraced family home
- Landscaped private rear garden
- Quiet residential street in the heart of East Dulwich
- Double reception room
- Kitchen dining room
- Downstairs guest toilet
- Convenient location

ALPS Estates Ltd trading as Pickwick Estates  
 47 Honor Oak Park Honor Oak  
 London, SE23 1EA, United Kingdom  
 Reg No : 7444750  
 Registered in England

Telephone : 020 3397 1166  
 Website : <https://www.pickwickestates.co.uk>





Which every effort is made to accurately reproduce these floor plans, measurements are approximate, not to scale and for illustrative purposes only.  
© Datasoft Energy Assessors Ltd. www.datasoft.co.uk

For Full EPC information, click [here](#)