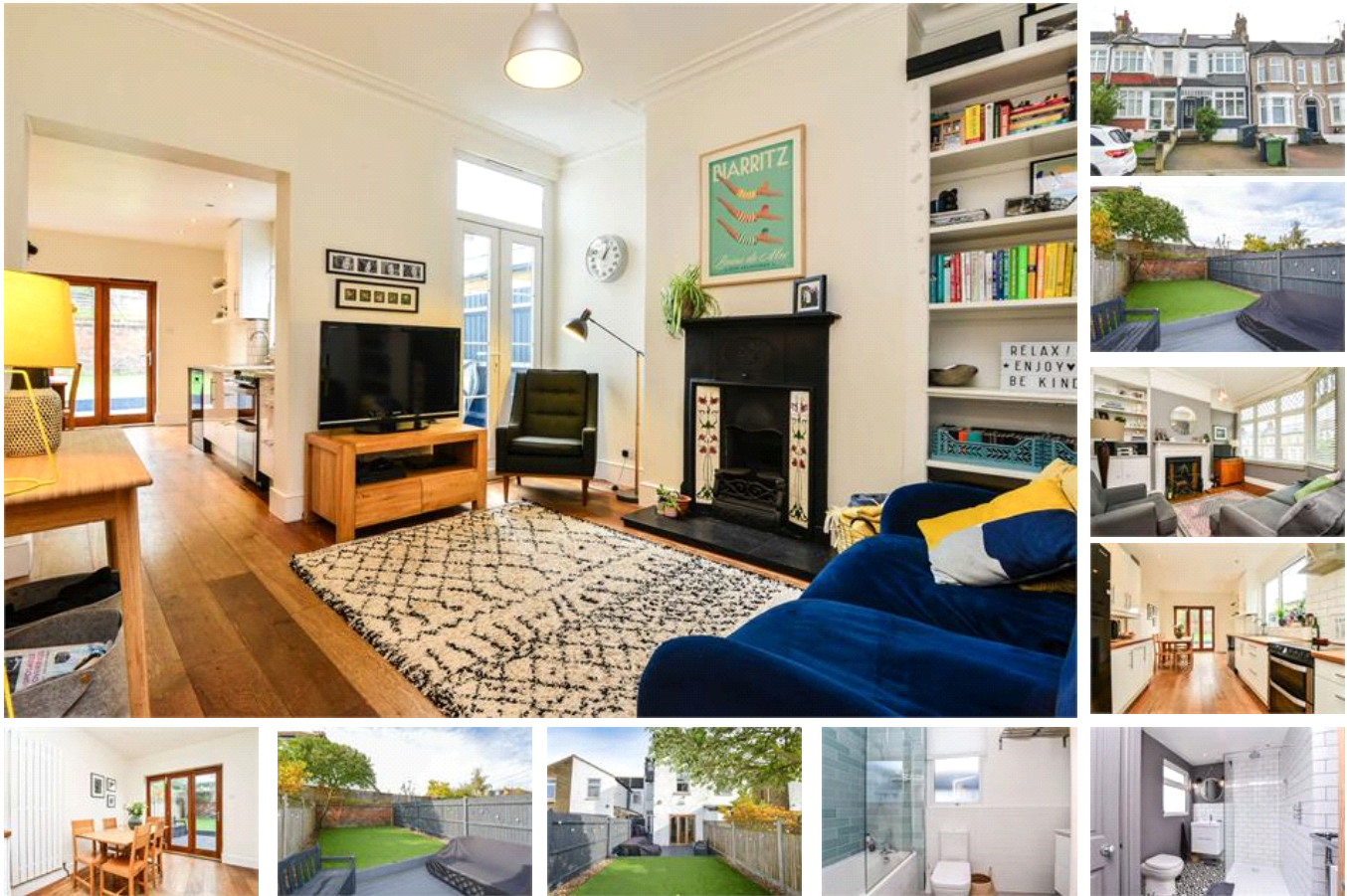


Manwood Road, SE4 (5 bedroom House)

£775,000 (Guide Price)



property description

A beautifully presented 5 double bedroom, 2 bathroom, mid terrace period family home conveniently located between the amenities of Crofton Park and Catford. The house offers over 1500 sqft (141 sqm) of well-proportioned living accommodation over 3 floors and benefits from period features, OFF STREET PARKING, double glazing throughout and a landscaped WEST facing private rear garden. The house is set back from the street by a good size driveway, the house itself has an attractive façade with bay windows and steps leading up to the front door which is protected by an ornate porch. Upon entry there is a wide hallway housing the staircase with period features and access to the ground ...

property features

- 5 double bedroom period family home
- WEST FACING landscaped private rear garden
- Off street parking
- Family bathroom
- Beautifully presented throughout with plenty of features
- 2 reception rooms with high ceilings and fireplaces
- Kitchen diner with bi-fold doors to the garden

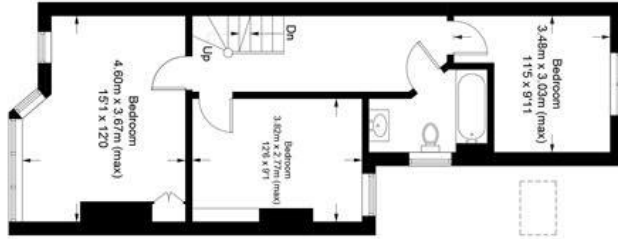
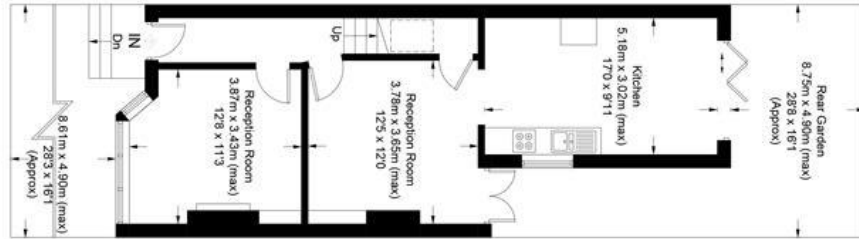
ALPS Estates Ltd trading as Pickwick Estates
47 Honor Oak Park Honor Oak
London, SE23 1EA, United Kingdom
Reg No : 7444750
Registered in England

Telephone : 020 3397 1166
Website : <https://www.pickwickestates.co.uk>

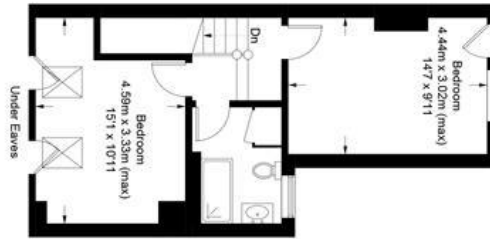


Manwood Road, SE4

Approximate Gross Internal Area = 141.4 sq m / 1522 sq ft



= Reduced headroom below 1.5m / 5'0"



This floor plan is for representation purposes only and is not drawn to scale.
The Gross Internal Area includes outbuildings shown on the plan.
Whilst every attempt has been made to ensure the accuracy of the plan measurements of doors, windows and rooms are approximate only and should be checked before making any decisions reliant upon them.
Copyright Bespokeplans.co.uk (10702872)

For Full EPC Information, click [here](#)