

Silverdale, SE26 (1 bedroom Flat)

£1,100/month



**Photo  
coming  
soon**

### property description

A recently redecorated one bedroom apartment, available now, located in this modern development superbly positioned just a few moments away from Sydenham Station and High Street. With an allocated parking space, the property is well presented throughout and comprises a double bedroom with a new carpet, a spacious lounge dining room, fitted kitchen and a bathroom. Available now on a part furnished basis.

### property features

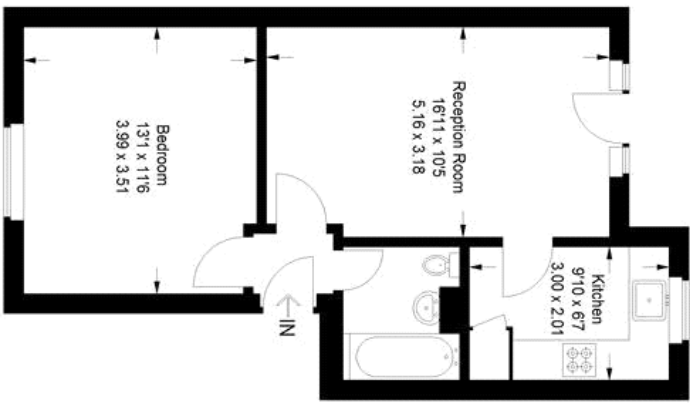
- A recently redecorated one bedroom apartment
- Modern well maintained development
- Communal gardens
- Part furnished
- Reception room
- Kitchen
- Bathroom
- Allocated parking space

Silverdale, SE26 (1 bedroom Flat)

£1,100/month



# Lyric Mews



## First Floor

Approximate Gross Internal Area  
457 sq ft / 42.5 sq m

Illustration for identification purposes only,  
measurements are approximate.  
Drawn for Benjamin Matthews.

For Full EPC information, click [here](#)