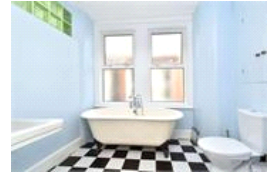


Kingswood Road , SW2 (3 bedroom Flat)

£1,850/month



property description

A spacious three double bedroom split level Victorian conversion located in Clapham Park which is well positioned for access to Clapham South, Clapham North and Brixton stations. Available from early February. The property is offered part furnished and would be ideal for professional sharers. The accommodation comprises a large lounge, a fitted kitchen breakfast room, three double bedrooms, a bathroom with a roll top bath and a separate shower room.

property features

- A spacious three double bedroom flat
- Split level Victorian conversion
- Available from FEBRUARY
- Fitted Kitchen breakfast room
- Part furnished
- Ideal for professional sharers
- Large lounge
- Bathroom with roll top bath

Kingswood Road , SW2 (3 bedroom Flat)

£1,850/month



Kingswood Road



First Floor

Second Floor

Approximate Gross Internal Area (Excluding Eaves Storage)
1047 sq ft / 97.3 sq m

Illustration for identification purposes only,
measurements are approximate.
Drawn for Benjamin Matthews.



For Full EPC information, click [here](#)