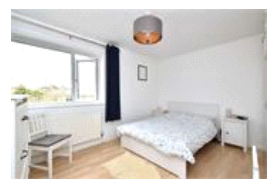
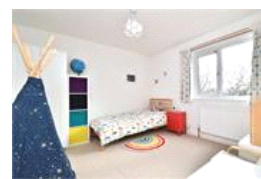
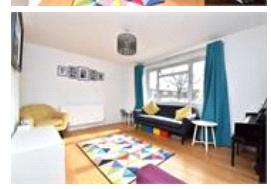


Foxborough Gardens , SE4 (3 bedroom House)

£575,000



property description

LAUNCHING SATURDAY 10TH APRIL. A Beautifully presented three-bedroom, freehold mid-century family home in a quiet residential cul-de-sac in Crofton Park, bordering Ladywell, in close proximity Ladywell Fields and Hilly Fields. These popular family starter homes are practical, very functional and conveniently located in the heart of Crofton Park. The house boasts a large 70ft (21.34m) private rear garden, a large reception, double glazing throughout, eat in kitchen diner, utility room and a stylish family bathroom. The property is set back from the street by a gated front garden where there is a secure wooden bike store with green roof and raised planters, great for growing vegetables...

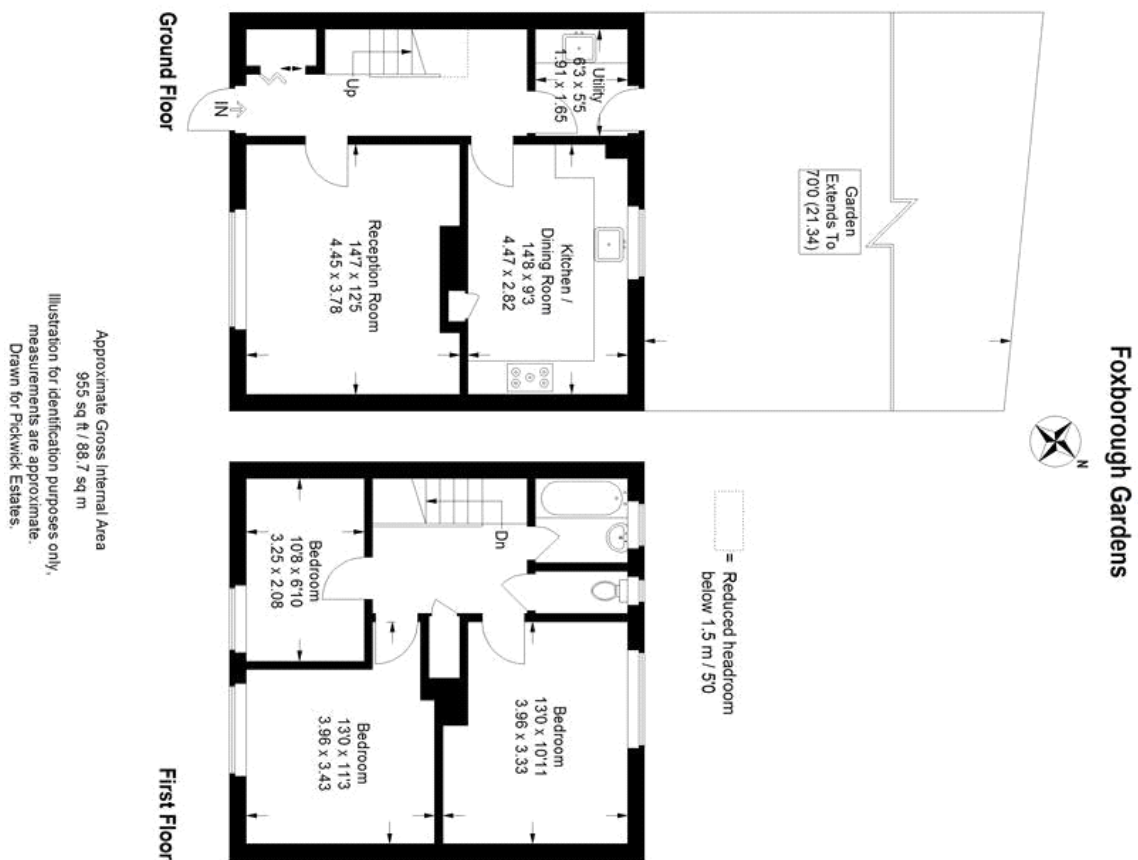
property features

- A beautifully presented three-bedroom, freehold mid-century family home
- Practical and functional family starter home
- Quiet residential cul-de-sac in Crofton Park, bordering Ladywell, in close proximity Ladywell
- LARGE 70ft (21.34m) private rear garden
- Good size kitchen dining room
- Utility room
- Double glazing throughout

ALPS Estates Ltd trading as Pickwick Estates
47 Honor Oak Park Honor Oak
London, SE23 1EA, United Kingdom
Reg No : 7444750
Registered in England

Telephone : 020 3397 1166
Website : <https://www.pickwickestates.co.uk>





For Full EPC information, click [here](#)