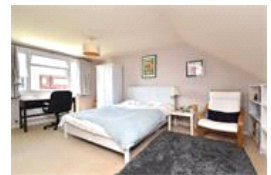
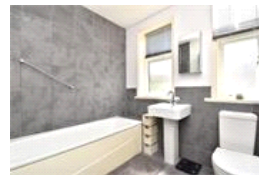
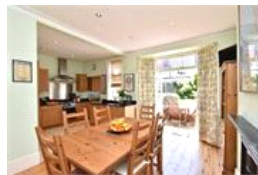
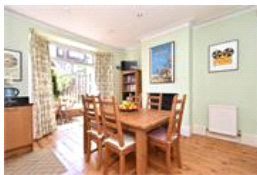
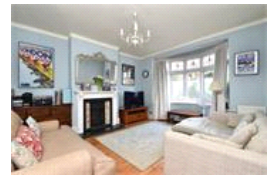


Parbury Road , SE23 (4 bedroom House)

£830,000 (OIEO)



## property description

Sit proudly on the sunny SOUTH facing garden side of this popular residential street is this is a superb 4-bedroom, 1930's mid terrace family home offering plenty of well-proportioned living accommodation of 1403 sqft (130.4sqm). Parbury Road is located moments from all the convenient amenities the high street has to offer and Honor Oak Park station (within 210 meters!) offering excellent connections to London Bridge and on the Overground. The front of the house has an appealing façade with traditional curved bay windows on the first and second floor that still retain the original stain glass. A walled front garden shields the house from the street with a path leading to the front por...

## property features

- 4-bedroom 1930's mid terrace family home
- SOUTH facing private rear garden 38ft long (11.58m)
- Cosy front reception room
- Converted loft with en-suite shower room
- Kitchen dining room
- Plenty of original features such as stain glass and exposed wooden flooring
- Family bathroom
- Close to local amenities including green...

ALPS Estates Ltd trading as Pickwick Estates  
47 Honor Oak Park Honor Oak  
London, SE23 1EA, United Kingdom  
Reg No : 7444750  
Registered in England

Telephone : 020 3397 1166  
Website : <https://www.pickwickestates.co.uk>





For Full EPC Information, click [here](#)