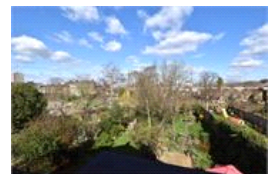
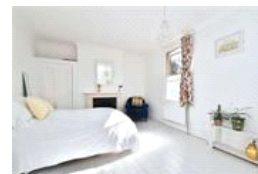
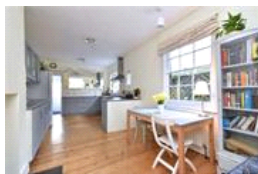
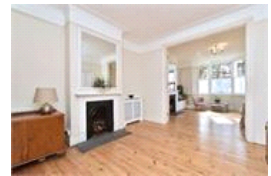
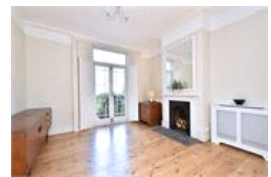
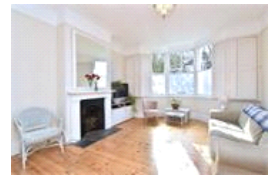


Ashmead Road , SE8 (5 bedroom House)

£975,000 (OIEO)



## property description

LAUNCHING SATURDAY AFTERNOON 27TH MARCH. Offering an abundance of period character and charm is this substantial five-bedroom Victorian family home, located on a quiet, tree lined, desirable road in the St Johns conservation area. The house benefits from being sold CHAIN FREE, it has a large 80ft (24.38m) rear garden and is conveniently located to a selection transportation links, approx 2 mins walk to St Johns station as well as a selection of great schools and local amenities. This handsome house has an imposing Victorian façade of exposed bricks and original sash windows. The property is set back from the street by front garden with hedges either side and a path leading to the origin...

## property features

- Characterful and substantial five bedroom Victorian family home
- Private, landscaped 80ft (24.38m) rear garden and a front garden
- Two large reception rooms with high ceilings and fireplaces
- Spacious kitchen dining room
- Family bathroom , utility room with quest toilet

ALPS Estates Ltd trading as Pickwick Estates  
47 Honor Oak Park Honor Oak  
London, SE23 1EA, United Kingdom  
Reg No : 7444750  
Registered in England

Telephone : 020 3397 1166  
Website : <https://www.pickwickestates.co.uk>





For Full EPC Information, click [here](#)