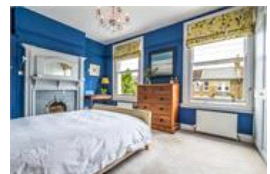
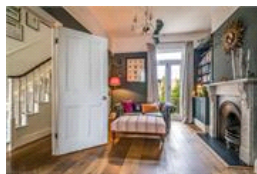
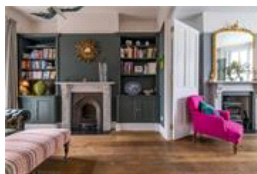
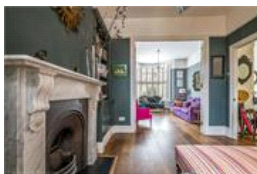
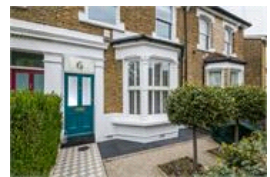


Braxfield Road, SE4 (5 bedroom House)

£1,000,000



## property description

LAUNCHING SATURDAY 8TH MAY. Beautifully presented with an elegant and sophisticated décor throughout, is this lovely 5 double bedroom, Victorian family home offering plenty of period features and bundles of character and charm. The house has been lovingly renovated by the current owners through their years of ownership, including replacing all the windows for double glazing, the front sash windows have been replaced with wooden framed ones to retain the character of this lovely house. This handsome Victorian mid terrace property has plenty of kerb appeal with an impressive period façade of exposed London stock bricks, complimented with detailed masonry surrounding the sash windows and ...

## property features

- Beautifully presented 5 double bedroom Victorian family home
- Approximatley 40ft (12m) private landscaped rear garden and a neatly landscaped walled front
- Lots of period features including working fireplaces, a wood burner and high ceilings with cornicing
- Kitchen dining room with under floor heating

ALPS Estates Ltd trading as Pickwick Estates  
47 Honor Oak Park Honor Oak  
London, SE23 1EA, United Kingdom  
Reg No : 7444750  
Registered in England

Telephone : 020 3397 1166  
Website : <https://www.pickwickestates.co.uk>



