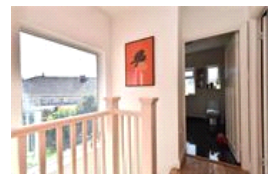
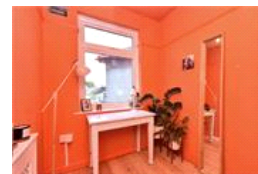
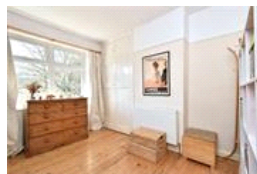
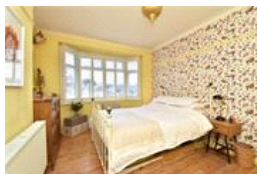
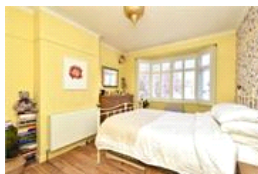
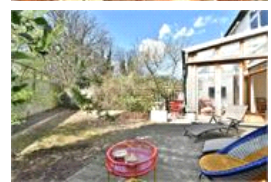
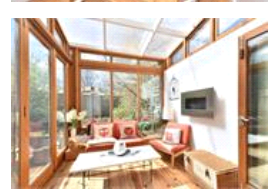
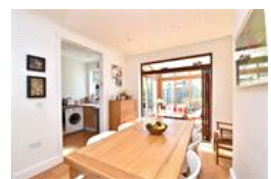
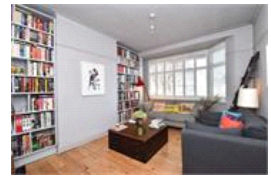


Millmark Grove, SE14 (3 bedroom House)

£650,000



## property description

A 1930's end of terrace 3 bedroom family home, with a hard wood conservatory and a large, private south west -facing garden that perfectly catches the afternoon light. The ground floor includes a sizeable hallway, living room, dining room, kitchen and conservatory. The living room features a large bay window with plantation shutters, original wooden floorboards and inbuilt shelving. The dining room gives on to the conservatory via hard timber and glass concertina doors and the kitchen looks out onto the garden. The bright kitchen and dining room capture the light beautifully. On the first floor there are two double bedrooms, a single bedroom and a large bathroom with under-floor heati...

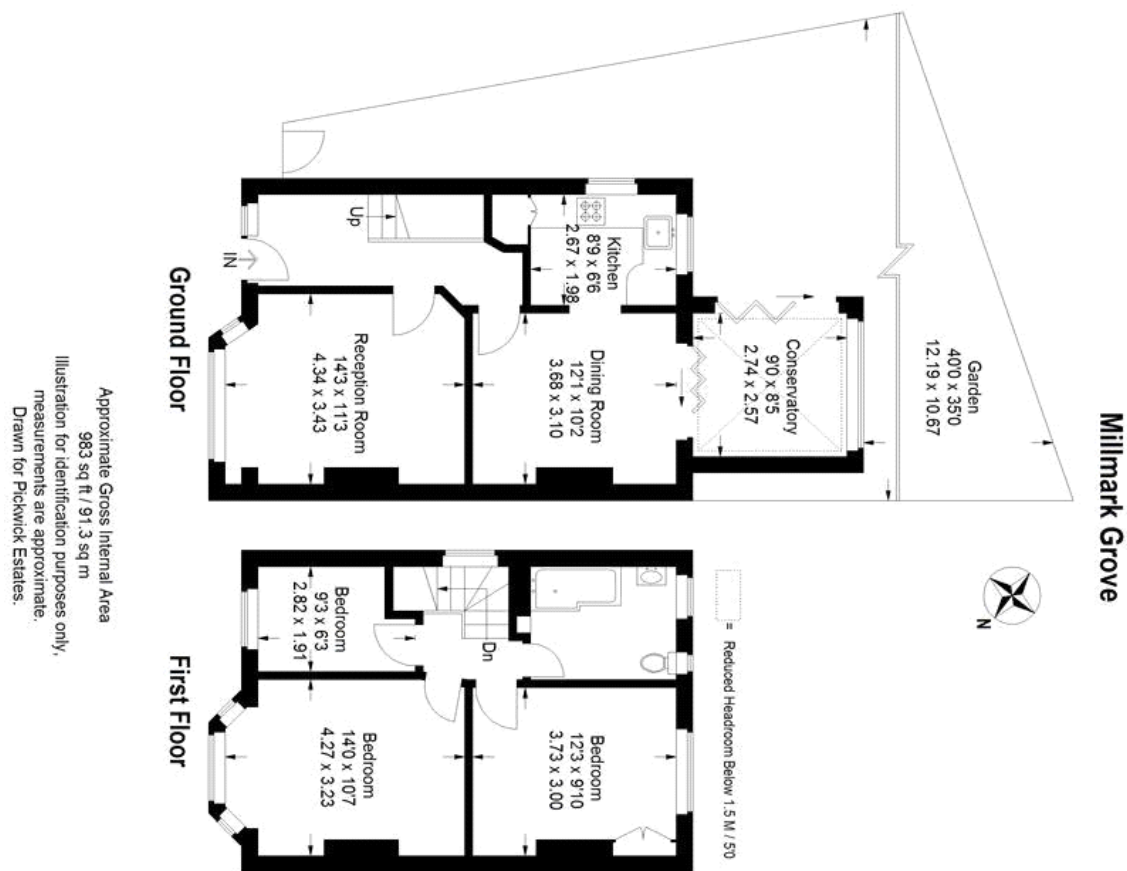
## property features

- End of Terrace three bedroom house.
- Good size reception room.
- Large kitchen diner.
- Launch date 10th April
- South West facing garden.
- Scope to extend (Subject to planning).
- Close to amenities.

ALPS Estates Ltd trading as Pickwick Estates  
47 Honor Oak Park Honor Oak  
London, SE23 1EA, United Kingdom  
Reg No : 7444750  
Registered in England

Telephone : 020 3397 1166  
Website : <https://www.pickwickestates.co.uk>





For Full EPC information, click [here](#)