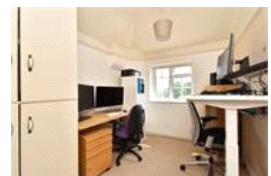
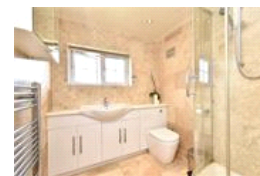
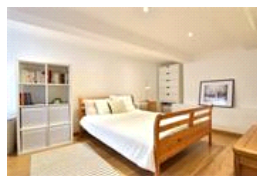
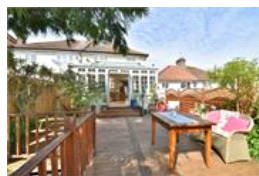
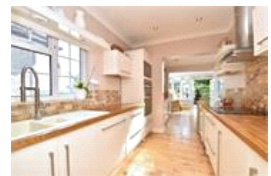
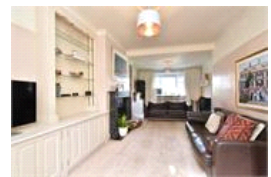


Bexhill Road, SE4 (4 bedroom House)

£875,000 (OIEO)



## property description

Located on this quiet residential street is this lovely 3/4 double bedroom semi-detached 1930's family home that is conveniently located between Honor Oak Park, Crofton Park, Ladywell and Catford, offering a variety of amenities and transportation links. The house is set over three floors with a lower ground level, ground floor and first floor giving it an abundance of space! (1696 sqft or 157.6 sqm). The property benefits from a large mature rear garden that is full of interesting plants, shrubs and trees. The house is also set well back from the street by an unusually large front garden which has been neatly manicured and planted with an array of plants, there is also a driveway for of...

## property features

- 4 double bedroom 1930's family home
- Set over 3 floors offering an abundance of floor space 1696 sqft or 157.6 sqm
- Large landscaped rear garden full of mature
- Off street parking and a lovely landscaped front garden
- Front double reception room
- Large rear reception/dining room extension

ALPS Estates Ltd trading as Pickwick Estates  
47 Honor Oak Park Honor Oak  
London, SE23 1EA, United Kingdom  
Reg No : 7444750  
Registered in England

Telephone : 020 3397 1166  
Website : <https://www.pickwickestates.co.uk>





For Full EPC information, click [here](#)