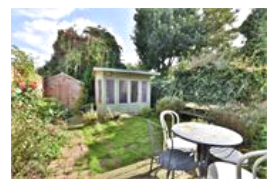
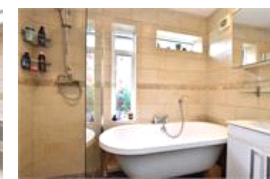
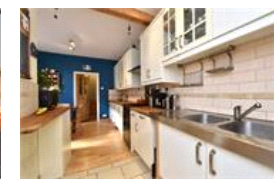
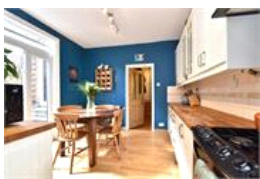
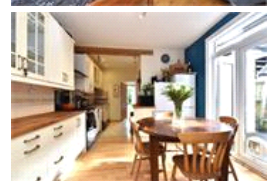
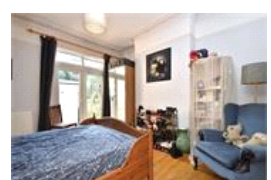
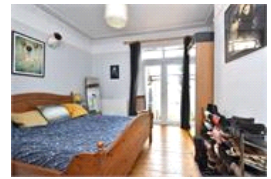


Stondon Park , SE23 (2 bedroom Flat)

£525,000 (OIEO)



property description

Occupying the whole of the ground floor of this handsome Victorian house is this lovely spacious two double bedroom GARDEN flat that has an abundance of period character and charm and is being sold with a SHARE OF FREEHOLD. The flat offers 888 sqft (82.5 sqm) of floor space and benefits from a large reception room, separate kitchen/dining room and a good size private rear garden which houses a summer house/home office, all of which is double glazed throughout. The house is set back from the street by a walled front garden and has good kerb appeal with exposed bricks and detailed masonry around the windows and arched entrance. Upon entry to the flat there is a hallway that has orig...

property features

- Spacious 2 double bedroom GARDEN flat
- Occupying the whole ground floor of a stunning Victorian conversion
- SHARE OF FREEHOLD
- Courtvard patio
- Private rear garden with a summer house/home office studio
- Kitchen dining room
- Bathroom, separate toilet and utility room
- Plenty of period features

ALPS Estates Ltd trading as Pickwick Estates
47 Honor Oak Park Honor Oak
London, SE23 1EA, United Kingdom
Reg No : 7444750
Registered in England

Telephone : 020 3397 1166
Website : <https://www.pickwickestates.co.uk>





For Full EPC Information, click [here](#)