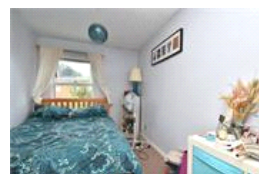
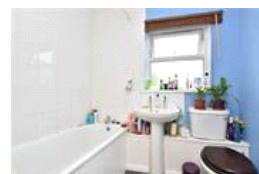
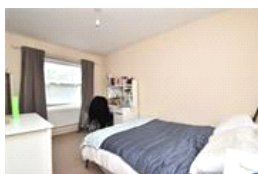
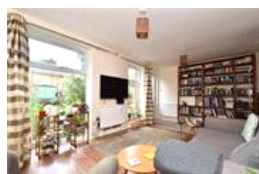
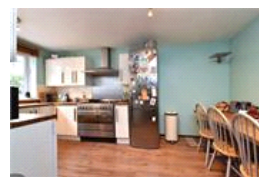
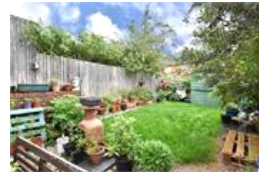
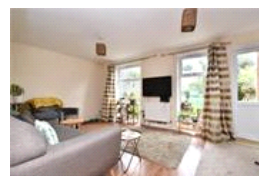


Brockley View , SE23 (3 bedroom House)

£1,650/month



property description

Perched near the top of the very sought after Brockley View, this lovely mid terrace, 3-bedroom family home is next to the open green space of Blythe Hill fields. The house is bright and spacious, set back from the street by a front garden and driveway. Upon entry, the hallway has plenty of storage and a downstairs WC. Stylish hardwearing wood-laminate flooring runs seamlessly throughout the downstairs living space. The large kitchen-diner at the front of the property is a great space for socialising and entertaining. Stylish and sleek with wooden worktops and tons of storage space. There is an integrated dishwasher, and room for a double range cooker, an American style fridge fre...

property features

- 3 bedroom mid century family home
- Close to Blythe Hill Fields
- Off street parking
- Family bathroom
- Private rear garden
- Kitchen dining room
- Reception room with direct access to the garden

ALPS Estates Ltd trading as Pickwick Estates
47 Honor Oak Park Honor Oak
London, SE23 1EA, United Kingdom
Reg No : 7444750
Registered in England

Telephone : 020 3397 1166
Website : <https://www.pickwickestates.co.uk>



Brockley View

Approximate Gross Internal Area = 89 sq m / 958 sq ft

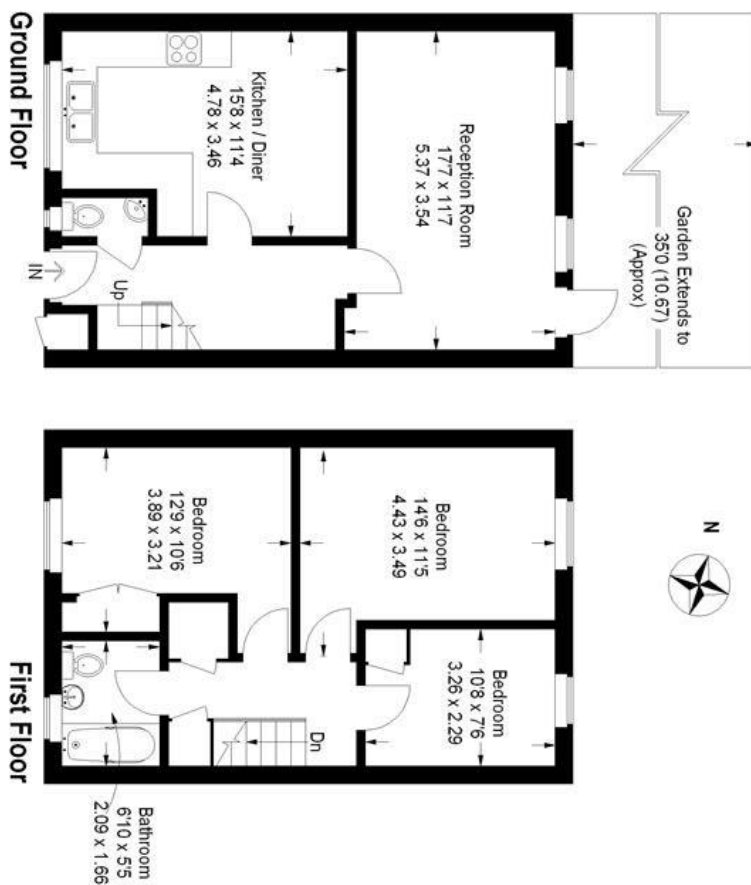


Illustration for identification purposes only.
measurements are approximate.
Drawn for Pickwick Estates.

For Full EPC information, click [here](#)