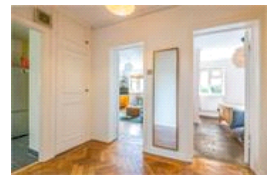
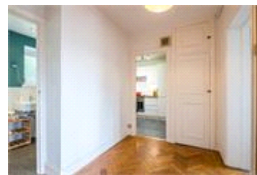
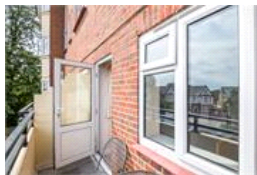
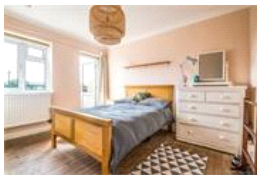
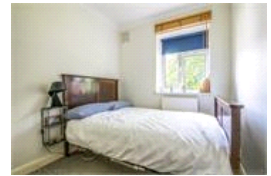
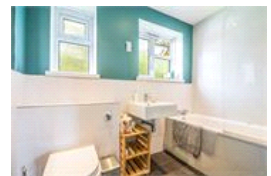
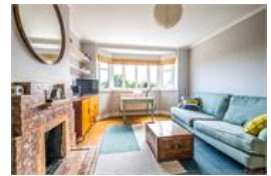


Oakhill Court , SE23 (2 bedroom Flat)

£1,500/month



## property description

Located in a cracking location at the top of Honor Oak Park is this lovely 2 bedroom flat, situated on the first floor of this attractive 1930's block. The flat offers generous living accommodation, briefly comprising spacious hallway with lovely Parquet wooden floors, a balcony, 2 bedrooms, spacious reception room with a bay window, white tiled bathroom, separate WC and a fully fitted modern kitchen with nice green views over the communal garden at the rear. The property also has double glazing throughout. This is a great flat. Viewing is highly recommended. The flat has un-allocated parking outside the building and access to private communal gardens at the rear. Oakhill Court is a few minu...

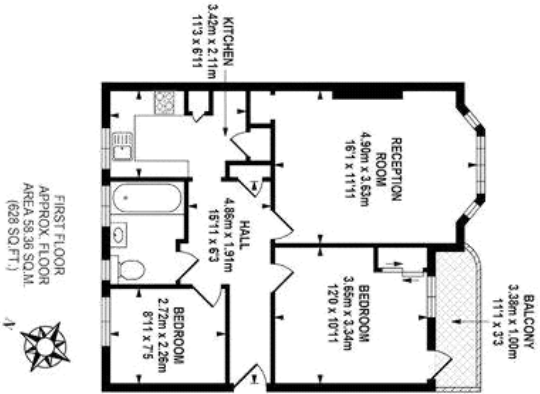
## property features

- Two Bedrooms
- Double glazing
- Good location
- 1st Floor
- Balcony & Communal garden
- Close to Honor Oak Park Station

ALPS Estates Ltd trading as Pickwick Estates  
47 Honor Oak Park Honor Oak  
London, SE23 1EA, United Kingdom  
Reg No : 7444750  
Registered in England

Telephone : 020 3397 1166  
Website : <https://www.pickwickestates.co.uk>





FIRST FLOOR  
APPROX FLOOR  
AREA 59.36 SQ.M.  
(628 SQ.FT.)



PICKNICK ESTATES

TOTAL APPROX FLOOR AREA 59.36 SQ.M. (628 SQ.FT.)

While every effort is made to accurately reproduce these floor plans, measurements are approximate and to scale and for illustrative purposes only.

© Cleverly Energy Solutions Ltd. 0800 086 000 000

Score	Energy rating	Current	Potential
92+	A		
81-91	B		
69-80	C	69   C	80   C
55-68	D		
39-54	E		
21-38	F		
1-20	G		

For Full EPC information, click [here](#)