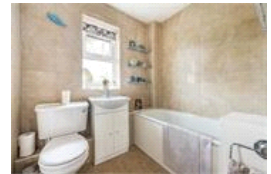
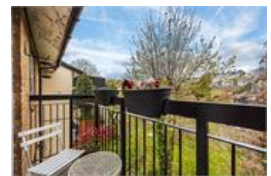


Westbourne Drive , SE23 (1 bedroom Flat)

£300,000



property description

Guide price £300,000 to £309,000 We are delighted to offer this fantastic bright and airy one bedroom purpose built second floor flat. The property comprises a beautiful reception room with space for dining and a balcony, modern fully fitted kitchen, double bedroom and bathroom. Westbourne Drive is centrally located to the town centre meaning the many local amenities are easily utilised. Here you are 3 minutes from Forest Hill station, where fast and frequent rail services will zip you to London Bridge in about 10 minutes. The London Overground Line is also a massive hit, with good links to Canary Wharf, and north to Shoreditch. Green space? It's quite simply surrounded! Horniman Gardens, Brenchley Gardens, One Tree Hill, Blythe Hill Fields, Crystal Palace and Dulwich Parks are all local. Devonshire Road Nature Reserve also lies just across the road too.

property features

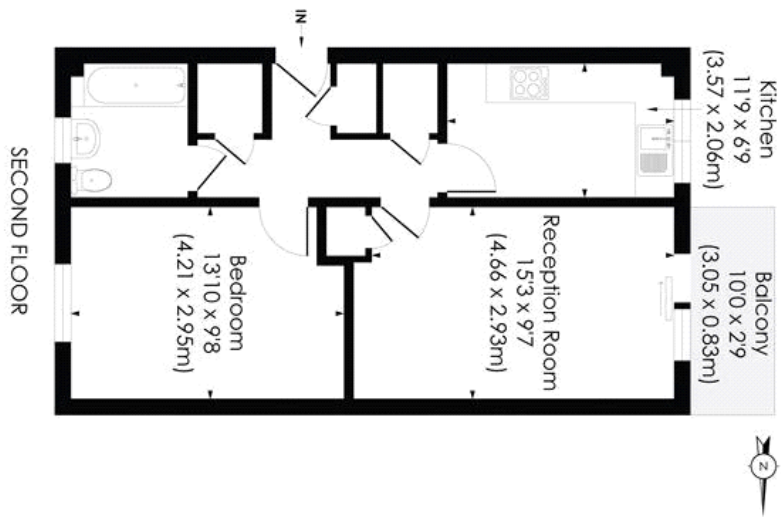
- One bedroom flat
- Private balcony
- Well maintained purpose built block
- Nice bathroom
- Modern fully fitted kitchen
- Bright and airy
- Lovely reception room
- Wooden floors



WESTBOURNE DRIVE, SE23

Approx. Gross Internal Floor Area

520 Sq. Ft/48.35 Sq. m



For Full EPC information, click [here](#)