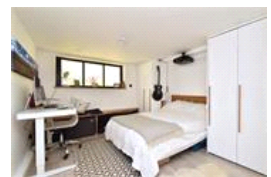
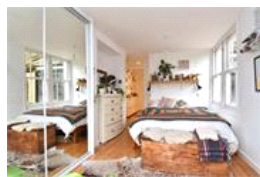
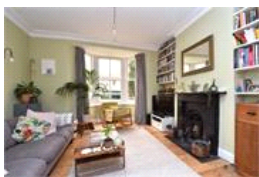


Barry Road , SE22 (2 bedroom Flat)

£680,000 (OIEO)



property description

Offering 862 sqft (80.1 sqm) and occupying the entire ground and lower ground floor of this handsome Victorian house is this very well proportioned 2 double bedroom GARDEN flat. The property is in excellent condition throughout, having been tastefully decorated by the current owners and offers a wealth of period features throughout such as high ceilings with cornicing and original exposed floorboards that run seamlessly through most of the ground floor. The flat benefits from a neatly landscaped 40ft private rear garden and front garden that doubles up as unofficial off-street parking. A large kitchen dining room, charming reception room, 2 good sized double bedrooms and lots of natural ...

property features

- Spacious 2 double bedroom split level GARDEN flat sold with a SHARE OF FREEHOLD and CHAIN FREE
- 40ft landscaped private rear garden
- Ground and lower ground floor of this handsome
- Bathroom on the ground floor and an en-suite wet room
- Kitchen dining room great for entertaining guests
- Charming reception room with period features

ALPS Estates Ltd trading as Pickwick Estates
47 Honor Oak Park Honor Oak
London, SE23 1EA, United Kingdom
Reg No : 7444750
Registered in England

Telephone : 020 3397 1166
Website : <https://www.pickwickestates.co.uk>





For Full EPC information, click [here](#)